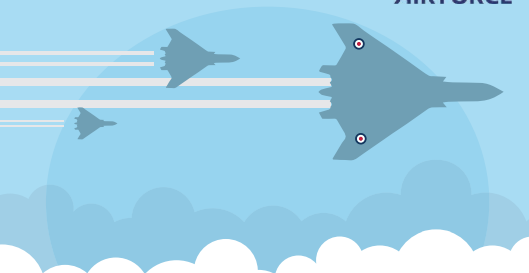
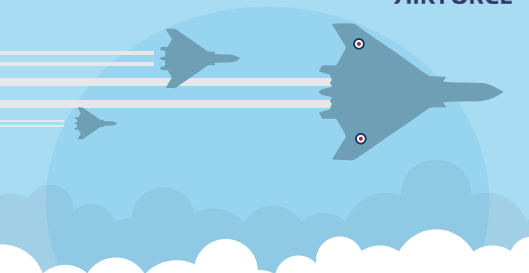


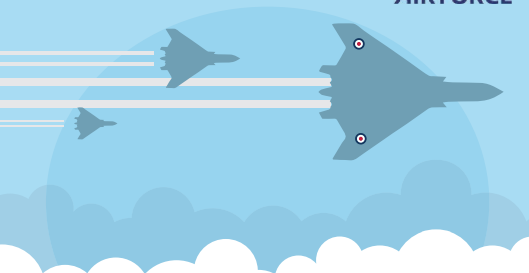
Beat That Stat!



Beat That Stat!



Beat That Stat!



Beat That Stat!

The Royal Air Force is the United Kingdom's aerial force. It was formed towards the end of the First World War in 1918.



It became the largest air force in the world at the time! The RAF works with partners around the world to strengthen national and international security and to protect the interests of the UK and its allies. The RAF identify and manage threats before they happen through intelligence, surveillance and reconnaissance.

Beat That Stat!

Beat That Stat! is a card game full of facts and figures. Your aim is to try to win the most cards by having the highest value statistics to beat those of your opponents. If your card wins, you get to take their cards from them. As an extra bonus you get to learn lots of really interesting facts about the aircraft of the RAF, past and present.

Perhaps it will inspire you to find out more. You could visit the RAF museum. Have a look on this site: www.rafmuseum.org.uk.



How to Play

1. Shuffle the pack.
2. Deal out the cards face down to each player.
3. Each player looks at the card at the top of their pack.
4. Player to the dealer's left starts, chooses and reads out one category and its stat from their top card.
5. The other players read out the same stat.
6. The highest number wins all the cards from that round and puts them at the bottom of their pack.
7. If two or more cards have the same value the cards from this round are put in the middle of the table. The winner of the next round also wins the cards in the middle.
8. The winner of each round is the next player to choose a stat from their top card.
9. The player with all the cards at the end of the game wins
10. If you want a quicker game, give it a time limit. The winner is the player with the most cards at the end of the game.



Categories and Ratings (what they mean)

- SPEED KM/HR** - Speed km/hr measures the maximum speed the aircraft can travel in kilometres miles per hour
- SPEED MPH** - Speed mph measures the maximum speed the aircraft can travel in miles per hour
- MACH SPEED** - Mach Speed is the ratio of the speed of an object to the speed of sound. An aircraft moving twice as fast as the speed of sound is said to be traveling at Mach 2
- MAIDEN FLIGHT** - Maiden flight/Year put into service is the term used to describe the aircraft's first flight or the year it was first introduced into the service
- NUMBER PRODUCED** - The number produced is the number given at the time of the information source being published.
- COST** - The cost is the price of a single unit. Due to inflation over many years this price may seem really high for newer aircraft, or really low for older ones. That's inflation! For consistency we have converted all prices to UK Pound sterling currency.
- WINGSPAN** - Wingspan or Rotor Diameter is the maximum extent across the wings of an aircraft measured from tip to tip
- CREW CAPACITY** - This is the typical number of crew that the aircraft can carry
- FLIGHT RANGE** - The Flight Range is the maximum distance an aircraft can fly between take-off and landing, as limited by fuel capacity in powered aircraft.
- BEAT THAT STAT RATING** - The BTS Rating is an overall score for each aircraft, based mainly on Speed and Range with the other categories also taken into account to decide how fantastic we feel each aircraft is. The highest number in each category wins.

How to work out the rankings:

Speed km/hr - Higher number wins

Speed mph - Higher number wins

Mach Speed - Higher number wins

Maiden flight - Later date wins

Number produced - Higher number wins

Cost - Higher number wins

Wingspan - Higher number wins

Crew Capacity - Higher number wins

Flight Range - Higher number wins



Definitions

- AERODYNAMIC** - Having a shape which reduces the drag from air moving past.
- AERONAUTICAL** - The science or practice of building or flying aircraft.
- AFTERBURNER NOZZLES** - A device in the tailpipe of a turbojet engine for injecting fuel into the hot exhaust gases and burning it to provide extra thrust.
- AUTONOMOUS FLIGHT** - Ability of operating without direct human control.
- AVIONICS** - Electronic equipment fitted in an aircraft.
- CONFIGURATION** - Arrangement of parts in a particular form.
- CSAT** - Command Support Air Transport.
- DETERRENT** - A thing that discourages someone from doing something.
- ECM** - Electronic Countermeasure Equipment used to trick an enemy's detection systems.
- FENESTRON TAIL** - A protected tail rotor of a helicopter operating like a ducted fan.
- INNOVATION** - New methods, ideas or product.
- INTELLIGENCE** - The collection of information of military value.
- INTERCEPTOR** - A fast aircraft for stopping or repelling enemy aircraft.
- JET PROPULSION** - Forward movement created by the backward ejection of a high-speed jet of gas or liquid.
- JET-POWERED** - Powered by one or more jet engines.
- LOGISTIC** - The organisation of something complicated such as the distribution of supplies.
- MACH SPEED** - The ratio of the speed of an object to the speed of sound. An aircraft moving twice as fast as the speed of sound = 'Mach 2'.
- MAIDEN FLIGHT** - An aircraft's first flight.
- MANOEUVRABILITY** - Ability to be moved easily while in motion.
- MMRT** - Multi Role Tanker Transport.



Definitions

- MOD** - Ministry of Defence.
- MONOPLANE** - An aircraft with one pair of wings.
- NAVIGATOR** - A person who plans the route of an aircraft.
- PARATROOP** - A group of soldiers trained to jump out of aircraft using a parachute.
- PAYLOAD** - The part of a vehicle's load, such as passengers and cargo, from which income is earned.
- RECONNAISSANCE** - Military observation of a region to locate an enemy or find strategic features.
- RETRACTABLE** - Able to be drawn back in.
- ROTORCRAFT** - Collective name for helicopters.
- SHIPPING BLOCKADE** - Sealing off a place to prevent goods or people from entering or leaving.
- SPAN-LOADING** - The ratio of the weight of an airplane to its wingspan loading.
- STRATEGIC** - The gaining of overall or long-term military advantage.
- SUBSONIC** - Flying at a speed less than the speed of sound.
- SUPERSONIC** - Flying at a speed greater than that of the speed of sound.
- SURVEILLANCE** - Close observation.
- SWEPT WING** - The shape of a wing for high subsonic and supersonic speeds.
- TACTICAL USE** - In immediate support of military operations.
- TANDEM ROTOR** - Two large horizontal rotor assemblies mounted one in front of the other.
- TURBOPROP** - A turboprop engine is a turbine engine that drives an aircraft propeller.
- TWIN-BOOM** - The rear airframe consists of two separate fuselages connected by a single horizontal stabilizer.
- UTILITY AIRCRAFT** - A light aircraft usually used for transporting people, freight or other supplies.

Eurofighter Typhoon FGR4



SPEED	1,550 mph (2,495 km/hr)
MACH SPEED	2.02
MAIDEN FLIGHT	1994
NUMBER PRODUCED	570
COST	£125 million
WINGSPAN	36 ft
CREW CAPACITY	2
FLIGHT RANGE	2,355 miles
BEAT THAT STAT RATING	9

Did you know?



The Typhoon can reach speeds of up to twice the speed of sound and can reach 1,100 mph in just over two minutes from take-off. The aircraft's name, Typhoon, was adopted in September 1998. It is in service with several airforces, including the RAF.

F-35B Lightning



SPEED	1,199 mph (1,929 km/hr)
MACH SPEED	1.56
MAIDEN FLIGHT	2006
NUMBER PRODUCED	530
COST	£91 million
WINGSPAN	35 ft
CREW CAPACITY	2
FLIGHT RANGE	1,700 miles
BEAT THAT STAT RATING	7

Did you know?



The F-35B Lightning has more than 40,000 pounds of thrust that can propel it to speeds of about Mach 1.6 (1,200 mph). It is a single-seat, single-engine, all-weather aircraft. This aircraft is expected to operate until 2070.

English Electric Lightning



SPEED	1,128 mph (1,815 km/hr)
MACH SPEED	1.47
MAIDEN FLIGHT	1954
NUMBER PRODUCED	337
COST	£199,000
WINGSPAN	35 ft
CREW CAPACITY	1
FLIGHT RANGE	849 miles
BEAT THAT STAT RATING	4

Did you know?



The English Electric Lightning is a British fighter aircraft that served as an interceptor during the 1960s, the 1970s and 1980s. It is a UK designed-and-built fighter capable of Mach 2.

Panavia Tornado F3 I



SPEED	1,674 mph (2,694 km/hr)
MACH SPEED	2.18
MAIDEN FLIGHT	1979
NUMBER PRODUCED	218
COST	£14 million
WINGSPAN	46 ft
CREW CAPACITY	2
FLIGHT RANGE	1,151 miles
BEAT THAT STAT RATING	6

Did you know?



The Tornado F3's improvements over the earlier model included engines for high-altitude use, longer afterburner nozzles and automatic wing sweep control which greatly enhanced movement.

Panavia Tornado GR4



SPEED	870 mph (1,400 km/hr)
MACH SPEED	1.13
MAIDEN FLIGHT	1974
NUMBER PRODUCED	992
COST	£14 million
WINGSPAN	47 ft
CREW CAPACITY	2
FLIGHT RANGE	860 miles
BEAT THAT STAT RATING	4

Did you know?



Aeronautical designers made the Panavia Tornado with variable-geometry wing designs for the manoeuvrability and efficient cruise of straight wings with the speed of swept wing designs. It was jointly manufactured by Italy, the United Kingdom, and West Germany.

Boeing E-3D Sentry AEW1



SPEED	530 mph (854 km/hr)
MACH SPEED	0.69
MAIDEN FLIGHT	1976
NUMBER PRODUCED	68
COST	£243 million
WINGSPAN	146 ft
CREW CAPACITY	4
FLIGHT RANGE	4,600 miles
BEAT THAT STAT RATING	7

Did you know?



The Boeing Sentry is an American airborne early warning and control aircraft. It provides all-weather surveillance, command, control, and communications, and is used by several airforces including the Royal Air Force.

Boeing E-7 Wedgetail



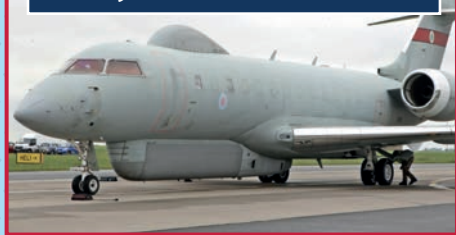
SPEED	530 mph (854 km/hr)
MACH SPEED	0.69
MAIDEN FLIGHT	2004
NUMBER PRODUCED	14
COST	£300 million
WINGSPAN	117 ft
CREW CAPACITY	10
FLIGHT RANGE	4,000 miles
BEAT THAT STAT RATING	7

Did you know?



The Boeing E-7 Wedgetail is a twin-engine airborne early warning and control aircraft. It has a fixed, active electronically scanned array radar antenna. It is believed to be named after the wedge-tailed eagle.

Raytheon Sentinel R1



SPEED	667 mph (1,073 km/hr)
MACH SPEED	0.86
MAIDEN FLIGHT	2004
NUMBER PRODUCED	5
COST	£190 million
WINGSPAN	93 ft
CREW CAPACITY	5
FLIGHT RANGE	5,747 miles
BEAT THAT STAT RATING	10

Did you know?



The Raytheon Sentinel is an airborne battlefield and ground surveillance aircraft. The cockpit has a centrally housed, pull-down screen capable of displaying a moving map.

Hawker Beechcraft Shadow R1



SPEED

356 mph (573 km/hr)

MACH SPEED

0.46

MAIDEN FLIGHT

1972

NUMBER PRODUCED

3,781

COST

£6 million

WINGSPAN

57 ft

CREW CAPACITY

2

FLIGHT RANGE

3,185 miles

BEAT THAT STAT RATING

4

Did you know?



The Beechcraft Super King Air family is part of a line of twin-turboprop aircraft. It has been in continuous production since 1974, the longest production run of any civilian turboprop aircraft in its class.

General Atomics MQ-9A Reaper



SPEED

300 mph (482 km/hr)

MACH SPEED

0.39

MAIDEN FLIGHT

2001

NUMBER PRODUCED

195

COST

£12 million

WINGSPAN

65 ft

CREW CAPACITY

0 (Unmanned)

FLIGHT RANGE

1,200 miles

BEAT THAT STAT RATING

2

Did you know?

?

The General Atomics Reaper is an unmanned aerial vehicle which is remotely controlled by RAF personnel based on the ground. It is also known as Predator B. It is often used for surveillance.

Boeing RC-135W Rivet Joint



SPEED

580 mph (933 km/hr)

MACH SPEED

0.75

MAIDEN FLIGHT

1961

NUMBER PRODUCED

32

COST

£246 million

WINGSPAN

130 ft

CREW CAPACITY

3

FLIGHT RANGE

3,450 miles

BEAT THAT STAT RATING

7

Did you know?

?

The Boeing RC-135 is a family of large reconnaissance aircraft used by the Royal Air Force to provide real-time, on-scene information collection and analysis. Many variants have been modified numerous times, resulting in a large variety of designs and program names.

Boeing Poseidon MRA1



SPEED	564 mph (907 km/hr)
MACH SPEED	0.73
MAIDEN FLIGHT	2009
NUMBER PRODUCED	122
COST	£231 million
WINGSPAN	123 ft
CREW CAPACITY	2
FLIGHT RANGE	1,381 miles
BEAT THAT STAT RATING	4

Did you know?



The Boeing Poseidon was developed for the United States Navy and also operated by the RAF. It is used for anti-submarine and anti-surface operations and for shipping blockade roles.

Nimrod MRA4



SPEED	571 mph (918 km/hr)
MACH SPEED	0.74
MAIDEN FLIGHT	2004
NUMBER PRODUCED	5
COST	£100 million
WINGSPAN	127 ft
CREW CAPACITY	10
FLIGHT RANGE	6,910 miles
BEAT THAT STAT RATING	10

Did you know?



The Nimrod MRA4 was intended to replace the Nimrod MR2 to increase the Nimrod fleet with improvements that included a digital glass cockpit, new detection systems and more efficient jet engines. However due to delays the project was cancelled.

Boeing C-17 Globemaster III



SPEED	670 mph (1,078 km/hr)
MACH SPEED	0.87
MAIDEN FLIGHT	1991
NUMBER PRODUCED	279
COST	£173 million
WINGSPAN	169 ft
CREW CAPACITY	3
FLIGHT RANGE	2,780 miles
BEAT THAT STAT RATING	8

Did you know?



The C-17 Globemaster performs tactical and strategic airlift missions, transporting troops and cargo throughout the world. Additional roles include medical evacuation and airdrop duties.

Airbus A330 MRTT Voyager



SPEED	547 mph (880 km/hr)
MACH SPEED	0.71
MAIDEN FLIGHT	2007
NUMBER PRODUCED	42
COST	£150 million
WINGSPAN	198 ft
CREW CAPACITY	3
FLIGHT RANGE	1,150 miles
BEAT THAT STAT RATING	3

Did you know?



The Airbus Voyager is an aerial refuelling tanker aircraft. MMRT stands for Multi Role Tanker Transport. It is an air-to-air refuelling and transport aircraft that can refuel other aircraft whilst in flight.

Lockheed Martin C-130J Hercules C4



SPEED	417 mph (671 km/hr)
MACH SPEED	0.54
MAIDEN FLIGHT	1996
NUMBER PRODUCED	400
COST	£111 million
WINGSPAN	132 ft
CREW CAPACITY	3
FLIGHT RANGE	2,100 miles
BEAT THAT STAT RATING	4

Did you know?



The Hercules is the RAF's primary tactical transport aircraft. It has been the backbone of UK operational tactical mobility tasks since it was brought into service in 1999.

Airbus A400M Atlas



SPEED	485 mph (781 km/hr)
MACH SPEED	0.63
MAIDEN FLIGHT	2009
NUMBER PRODUCED	88
COST	£136 million
WINGSPAN	139 ft
CREW CAPACITY	4
FLIGHT RANGE	2,100 miles
BEAT THAT STAT RATING	5

Did you know?



Airbus A400M Atlas is a European four-engine turboprop military transport aircraft. It can perform aerial refuelling and medical evacuation when fitted with appropriate equipment.

BAe 146 CC2 RJ70



SPEED

490 mph (789 km/hr)

MACH SPEED

0.63

MAIDEN FLIGHT

1981

NUMBER PRODUCED

387

COST

£350 million

WINGSPAN

86 ft

CREW CAPACITY

2

FLIGHT RANGE

2,404 miles

BEAT THAT STAT RATING

5

Did you know?



The BAE 146 is primarily tasked in the Command Support Air Transport (CSAT) role. Two 146 variants can be rapidly converted between passenger and cargo configurations. The CC2's primary role is the transport of senior government ministers and Ministry of Defence (MOD) personnel, and senior members of the Royal family.

Avro Vulcan B.2 XL426



SPEED	646 mph (1,039 km/hr)
MACH SPEED	0.84
MAIDEN FLIGHT	1952
NUMBER PRODUCED	136
COST	£750,000
WINGSPAN	99 ft
CREW CAPACITY	5
FLIGHT RANGE	2,607 miles
BEAT THAT STAT RATING	9

Did you know?



The Avro Vulcan XL426 is one of three remaining taxiable Avro Vulcans. It has been owned and maintained by the registered charity the Vulcan Restoration Trust since 1993. It served with the Royal Air Force from 1962 to 1986.

Handley Page Victor



SPEED	627 mph (1,009 km/hr)
MACH SPEED	0.81
MAIDEN FLIGHT	1952
NUMBER PRODUCED	86
COST	£350,000
WINGSPAN	110 ft
CREW CAPACITY	5
FLIGHT RANGE	6,004 miles
BEAT THAT STAT RATING	10

Did you know?

?

The Handley Page Victor is a British jet-powered strategic aircraft. It had been developed as part of the United Kingdom's airborne deterrent. A number of Victors were modified for strategic reconnaissance, using a combination of radar, cameras, and other sensors.

De Havilland DH 112 Venom



SPEED	640 mph (1,030 km/hr)
MACH SPEED	0.83
MAIDEN FLIGHT	1949
NUMBER PRODUCED	1,431
COST	£20,100
WINGSPAN	41 ft
CREW CAPACITY	1
FLIGHT RANGE	1,080 miles
BEAT THAT STAT RATING	4

Did you know?



The De Havilland DH 112 Venom is a British post-war single-engined jet aircraft. It has a distinctive twin-boom tail and composite wood/metal structure. Originally developed as a ground-attack fighter, it served as an interceptor as well.

Vickers VC10 Tanker



SPEED	580 mph (933 km/hr)
MACH SPEED	0.75
MAIDEN FLIGHT	1962
NUMBER PRODUCED	54
COST	£2 million
WINGSPAN	146 ft
CREW CAPACITY	4
FLIGHT RANGE	5,850 miles
BEAT THAT STAT RATING	9

Did you know?



The VC10 achieved the fastest crossing of the Atlantic by a subsonic jet airliner of 5 hours and 1 minute, a record that was held for 41 years. The engines were further from the runway surface than an underwing design, an important factor in operations from rough runways.

De Havilland Vampire T.11



SPEED	548 mph (882 km/hr)
MACH SPEED	0.71
MAIDEN FLIGHT	1943
NUMBER PRODUCED	3,268
COST	£29,000
WINGSPAN	38 ft
CREW CAPACITY	1
FLIGHT RANGE	1,220 miles
BEAT THAT STAT RATING	4

Did you know?

? The De Havilland Vampire is a British jet fighter. It was the second jet fighter to be operated by the RAF and the first to be powered by a single jet engine and have groundbreaking innovation of jet propulsion. Despite being originally ordered as an experimental aircraft only, it was decided to mass-produce the aircraft as an interceptor for the Royal Air Force.

SEPECAT Jaguar



SPEED	840 mph (1,350 km/hr)
MACH SPEED	1.09
MAIDEN FLIGHT	1968
NUMBER PRODUCED	543
COST	£6 million
WINGSPAN	28 ft
CREW CAPACITY	2
FLIGHT RANGE	1,182 miles
BEAT THAT STAT RATING	6

Did you know?



Originally designed as a jet trainer, the Jaguar soon changed to include supersonic performance, reconnaissance and tactical roles. It is a single-seat, swept-wing, twin-engine monoplane design, with tall tricycle-type retractable landing gear.

Hawker Siddeley Harrier



SPEED	731 mph (1,176 km/hr)
MACH SPEED	0.95
MAIDEN FLIGHT	1967
NUMBER PRODUCED	278
COST	£3 million
WINGSPAN	25 ft
CREW CAPACITY	1
FLIGHT RANGE	2,130 miles
BEAT THAT STAT RATING	8

Did you know?

?

The Hawker Siddeley Harrier is a British military aircraft. It was the first Harrier Jump Jet series of aircraft, used as the first operational ground attack and reconnaissance aircraft with vertical/short takeoff and landing.

British Aerospace 125



SPEED

370 mph (590 km/hr)

MACH SPEED

0.48

MAIDEN FLIGHT

1962

NUMBER PRODUCED

1,720

COST

£150,000

WINGSPAN

47 ft

CREW CAPACITY

2

FLIGHT RANGE

1,900 miles

BEAT THAT STAT RATING

2

Did you know?

?

The British Aerospace 125 has a wide variety of customers, ranging from government and military operators, businesses and several airlines. The Royal Air Force had a number of aircraft for multiple roles. The majority of 125's were operated in an airborne training capacity for air force navigators.

Armstrong Whitworth Argosy



SPEED	253 mph (407 km/hr)
MACH SPEED	0.33
MAIDEN FLIGHT	1959
NUMBER PRODUCED	74
COST	£725,000
WINGSPAN	115 ft
CREW CAPACITY	4
FLIGHT RANGE	3,450 miles
BEAT THAT STAT RATING	3

Did you know?



The Armstrong Whitworth Argosy was a British post-war transport/cargo aircraft. It featured an alternative door arrangement, which was largely for paratroop operations. The Argosy was operated by both the Royal Air Force (RAF) and various civil operators across the globe for numerous years.

Gloster Javelin FAW.1



SPEED

710 mph (1,142 km/hr)

MACH SPEED

0.92

MAIDEN FLIGHT

1951

NUMBER PRODUCED

436

COST

£125,000

WINGSPAN

52 ft

CREW CAPACITY

2

FLIGHT RANGE

954 miles

BEAT THAT STAT RATING

4

Did you know?

?

The Gloster Javelin is a subsonic night and all-weather interceptor aircraft. It is a twin-engine jet monoplane. Its aerodynamic delta wing and tailplane provided excellent manoeuvrability at high speed and excellent control at low landing speeds.

Boeing Chinook HC2 Helicopter



SPEED

183 mph (295 km/hr)

MACH SPEED

0.23

MAIDEN FLIGHT

1980

NUMBER PRODUCED

88

COST

£60 million

WINGSPAN

60 ft

CREW CAPACITY

4

FLIGHT RANGE

400 miles

BEAT THAT STAT RATING

1

Did you know?

?

The Boeing Chinook is a large, tandem rotor helicopter that has seen extensive service. The Chinook is expected to remain in RAF service until the 2040s. They provide routine supply and support missions to the British military.

Westland Puma HC1 Helicopter

**SPEED****169 mph (271 km/hr)****MACH SPEED****0.22****MAIDEN FLIGHT****1965****NUMBER PRODUCED****697****COST****£5 million****WINGSPAN****49 ft****CREW CAPACITY****3****FLIGHT RANGE****360 miles****BEAT THAT STAT RATING****1**

Did you know?



The Puma is a four-bladed, twin-engined medium transport/utility helicopter. It is used for personnel transport and logistic support duties. The descendants of the Puma remain in production in the 21st century.

Bell Griffin HAR.2s Helicopter



SPEED	160 mph (257 km/hr)
MACH SPEED	0.21
MAIDEN FLIGHT	1979
NUMBER PRODUCED	869
COST	£8 million
WINGSPAN	46 ft
CREW CAPACITY	2
FLIGHT RANGE	609 miles
BEAT THAT STAT RATING	1

Did you know?



The Bell Griffin is a multi-role utility helicopter used in a wide variety of roles including search and rescue missions, force protection and providing military aid to civilian authorities. It also has underslung Bambi Buckets for fire fighting. It can carry eight fully-equipped troops.

AgustaWestland AW101 Merlin Helicopter



SPEED

192 mph (308 km/hr)

MACH SPEED

0.25

MAIDEN FLIGHT

1987

NUMBER PRODUCED

180

COST

£22 million

WINGSPAN

61 ft

CREW CAPACITY

4

FLIGHT RANGE

510 miles

BEAT THAT STAT RATING

1

Did you know?

?

The AgustaWestland AW101 is a medium-lift helicopter. Dual flight controls are provided, though it can be flown by a single person. The instruments include six full-colour high-definition screens, an optional mission display and a digital map.

Westland WS-61 Sea King Helicopter



SPEED

129 mph (207 km/hr)

MACH SPEED

0.16

MAIDEN FLIGHT

1969

NUMBER PRODUCED

344

COST

£5 million

WINGSPAN

62 ft

CREW CAPACITY

4

FLIGHT RANGE

764 miles

BEAT THAT STAT RATING

1

Did you know?

?

As well as wartime roles, the Sea King is most well known for search and rescue. The Sea King was also adapted to meet the Royal Navy's requirement for a ship-based airborne early warning platform.

Eurocopter AS350 Squirrel



SPEED

178 mph (286 km/hr)

MACH SPEED

0.23

MAIDEN FLIGHT

1974

NUMBER PRODUCED

3,590

COST

£2 million

WINGSPAN

35 ft

CREW CAPACITY

1

FLIGHT RANGE

411 miles

BEAT THAT STAT RATING

1

Did you know?

?

The Eurocopter Squirrel is a single-engine light utility helicopter. It is known for its high-altitude performance. Both the main and tail rotors make use of composite material and are designed to minimize corrosion.

Airbus H145 Jupiter (EC145) Helicopter



SPEED	167 mph (268 km/hr)
MACH SPEED	0.21
MAIDEN FLIGHT	1999
NUMBER PRODUCED	1,500
COST	£8 million
WINGSPAN	36 ft
CREW CAPACITY	2
FLIGHT RANGE	420 miles
BEAT THAT STAT RATING	1

Did you know?



The Airbus H145 Jupiter provides advanced rotary wing flying training. The cockpit includes the very latest in avionics. It is a twin-engine aircraft and can carry up to nine passengers along with two crew. It has been used for training, logistics, medical evacuation, reconnaissance, and troop-transport operations.

Airbus H135 Juno (EC135) Helicopter



SPEED	178 mph (286 km/hr)
MACH SPEED	0.23
MAIDEN FLIGHT	1994
NUMBER PRODUCED	1,300
COST	£5 million
WINGSPAN	33 ft
CREW CAPACITY	1
FLIGHT RANGE	395 miles
BEAT THAT STAT RATING	1

Did you know?



The Airbus H135 is a twin-engine civil light utility helicopter. It is capable of flight under instrument flight rules and is outfitted with a digital automatic flight control system. It is mainly used for emergency medical services, law enforcement and military flight training.

English Electric Canberra



SPEED	580 mph (933 km/hr)
MACH SPEED	0.75
MAIDEN FLIGHT	1949
NUMBER PRODUCED	1,352
COST	£73,000
WINGSPAN	64 ft
CREW CAPACITY	3
FLIGHT RANGE	810 miles
BEAT THAT STAT RATING	2

Did you know?



In the 1950s, the Canberra could fly at a higher altitude than any other aircraft in the world. In 1957, a Canberra got a world record for reaching an altitude of 21,430 m. In 1951, another Canberra set another world record when it became the first jet aircraft to make a non-stop transatlantic flight.

Supermarine Spitfire



SPEED	370 mph (595 km/hr)
MACH SPEED	0.48
MAIDEN FLIGHT	1936
NUMBER PRODUCED	20,341
COST	£13,000
WINGSPAN	36 ft
CREW CAPACITY	1
FLIGHT RANGE	248 miles
BEAT THAT STAT RATING	1

Did you know?



The Spitfire was designed as a short-range, high-performance interceptor aircraft. It is a British single-seat fighter aircraft used by the Royal Air Force and other Allied countries before, during, and after World War II. Many variants were built and it was produced in greater numbers than any other British aircraft.

Red Arrows Hawk



SPEED	638 mph (1,026 km/hr)
MACH SPEED	0.83
MAIDEN FLIGHT	1974
NUMBER PRODUCED	1,000
COST	£18 million
WINGSPAN	32 ft
CREW CAPACITY	2
FLIGHT RANGE	1,565 miles
BEAT THAT STAT RATING	5

Did you know?



The Hawk is a British single-engine, jet-powered advanced trainer aircraft. It is used by the RAF's Red Arrows aerobatics display team. The Red Arrows team was formed in late 1964 and continue to perform spectacular feats of flying at many events.

Harrier GR5



SPEED	662 mph (1,065 km/hr)
MACH SPEED	0.86
MAIDEN FLIGHT	1985
NUMBER PRODUCED	143
COST	£13 million
WINGSPAN	30 ft
CREW CAPACITY	1
FLIGHT RANGE	350 miles
BEAT THAT STAT RATING	2

Did you know?



The Harrier GR5 is a vertical/short takeoff and landing aircraft, part of the jump jet family. Modifications included replacing the aluminium fuselage with resin/composite materials to reduce weight and increase range. Its functions are air interdiction, close air support missions and reconnaissance duties.

Avro Lancaster



SPEED	282 mph (454 km/hr)
MACH SPEED	0.36
MAIDEN FLIGHT	1941
NUMBER PRODUCED	7,377
COST	£50,000
WINGSPAN	102 ft
CREW CAPACITY	7
FLIGHT RANGE	2,530 miles
BEAT THAT STAT RATING	2

Did you know?



The Lancaster was the main aircraft for the night-time aerial campaigns of World War II. Other roles included long range anti-submarine patrol, air-sea rescue, photo-reconnaissance and aerial mapping. It was also used as a flying tanker for aerial refuelling, a transatlantic passenger aircraft, and even as a postal delivery airliner.

Blackburn Buccaneer



SPEED	670 mph (1,078 km/hr)
MACH SPEED	0.87
MAIDEN FLIGHT	1958
NUMBER PRODUCED	211
COST	£2 million
WINGSPAN	44 ft
CREW CAPACITY	7
FLIGHT RANGE	2,300 miles
BEAT THAT STAT RATING	7

Did you know?



The Blackburn Buccaneer is a British carrier-capable aircraft originally designed in the 1950s for the Royal Navy. It could approach enemy ships at low altitudes below the ship's radar horizon. The RAF adopted the Buccaneer in 1969 with new-builds having RAF-type communications and avionics equipment.

Vickers Valiant



SPEED	567 mph (912 km/hr)
MACH SPEED	0.73
MAIDEN FLIGHT	1951
NUMBER PRODUCED	107
COST	£400,000
WINGSPAN	114 ft
CREW CAPACITY	5
FLIGHT RANGE	4,500 miles
BEAT THAT STAT RATING	8

Did you know?



The Vickers Valiant was developed in the 1950's as a British high-altitude jet and later switched roles to undertake low-level flight. Some were converted to perform support roles such as aerial refuelling tankers and aerial reconnaissance. It was retired in 1965.

The Royal Air Force is the United Kingdom's aerial force. It was formed towards the end of the First World War in 1918.



It became the largest air force in the world at the time! The RAF works with partners around the world to strengthen national and international security and to protect the interests of the UK and its allies. The RAF identify and manage threats before they happen through intelligence, surveillance and reconnaissance.

Beat That Stat!

Beat That Stat! is a card game full of facts and figures. Your aim is to try to win the most cards by having the highest value statistics to beat those of your opponents. If your card wins, you get to take their cards from them. As an extra bonus you get to learn lots of really interesting facts about the aircraft of the RAF, past and present.

Perhaps it will inspire you to find out more. You could visit the RAF museum. Have a look on this site: www.rafmuseum.org.uk.



How to Play

1. Shuffle the pack.
2. Deal out the cards face down to each player.
3. Each player looks at the card at the top of their pack.
4. Player to the dealer's left starts, chooses and reads out one category and its stat from their top card.
5. The other players read out the same stat.
6. The highest number wins all the cards from that round and puts them at the bottom of their pack.
7. If two or more cards have the same value the cards from this round are put in the middle of the table. The winner of the next round also wins the cards in the middle.
8. The winner of each round is the next player to choose a stat from their top card.
9. The player with all the cards at the end of the game wins
10. If you want a quicker game, give it a time limit. The winner is the player with the most cards at the end of the game.



Categories and Ratings (what they mean)

- SPEED KM/HR** - Speed km/hr measures the maximum speed the aircraft can travel in kilometres miles per hour
- SPEED MPH** - Speed mph measures the maximum speed the aircraft can travel in miles per hour
- MACH SPEED** - Mach Speed is the ratio of the speed of an object to the speed of sound. An aircraft moving twice as fast as the speed of sound is said to be traveling at Mach 2
- MAIDEN FLIGHT** - Maiden flight/Year put into service is the term used to describe the aircraft's first flight or the year it was first introduced into the service
- NUMBER PRODUCED** - The number produced is the number given at the time of the information source being published.
- COST** - The cost is the price of a single unit. Due to inflation over many years this price may seem really high for newer aircraft, or really low for older ones. That's inflation! For consistency we have converted all prices to UK Pound sterling currency.
- WINGSPAN** - Wingspan or Rotor Diameter is the maximum extent across the wings of an aircraft measured from tip to tip
- CREW CAPACITY** - This is the typical number of crew that the aircraft can carry
- FLIGHT RANGE** - The Flight Range is the maximum distance an aircraft can fly between take-off and landing, as limited by fuel capacity in powered aircraft.
- BEAT THAT STAT RATING** - The BTS Rating is an overall score for each aircraft, based mainly on Speed and Range with the other categories also taken into account to decide how fantastic we feel each aircraft is. The highest number in each category wins.

How to work out the rankings:

Speed km/hr - Higher number wins

Speed mph - Higher number wins

Mach Speed - Higher number wins

Maiden flight - Later date wins

Number produced - Higher number wins

Cost - Higher number wins

Wingspan - Higher number wins

Crew Capacity - Higher number wins

Flight Range - Higher number wins



Definitions

- AERODYNAMIC** - Having a shape which reduces the drag from air moving past.
- AERONAUTICAL** - The science or practice of building or flying aircraft.
- AFTERBURNER NOZZLES** - A device in the tailpipe of a turbojet engine for injecting fuel into the hot exhaust gases and burning it to provide extra thrust.
- AUTONOMOUS FLIGHT** - Ability of operating without direct human control.
- AVIONICS** - Electronic equipment fitted in an aircraft.
- CONFIGURATION** - Arrangement of parts in a particular form.
- CSAT** - Command Support Air Transport.
- DETERRENT** - A thing that discourages someone from doing something.
- ECM** - Electronic Countermeasure Equipment used to trick an enemy's detection systems.
- FENESTRON TAIL** - A protected tail rotor of a helicopter operating like a ducted fan.
- INNOVATION** - New methods, ideas or product.
- INTELLIGENCE** - The collection of information of military value.
- INTERCEPTOR** - A fast aircraft for stopping or repelling enemy aircraft.
- JET PROPULSION** - Forward movement created by the backward ejection of a high-speed jet of gas or liquid.
- JET-POWERED** - Powered by one or more jet engines.
- LOGISTIC** - The organisation of something complicated such as the distribution of supplies.
- MACH SPEED** - The ratio of the speed of an object to the speed of sound. An aircraft moving twice as fast as the speed of sound = 'Mach 2'.
- MAIDEN FLIGHT** - An aircraft's first flight.
- MANOEUVRABILITY** - Ability to be moved easily while in motion.
- MMRT** - Multi Role Tanker Transport.



Definitions

- MOD** - Ministry of Defence.
- MONOPLANE** - An aircraft with one pair of wings.
- NAVIGATOR** - A person who plans the route of an aircraft.
- PARATROOP** - A group of soldiers trained to jump out of aircraft using a parachute.
- PAYLOAD** - The part of a vehicle's load, such as passengers and cargo, from which income is earned.
- RECONNAISSANCE** - Military observation of a region to locate an enemy or find strategic features.
- RETRACTABLE** - Able to be drawn back in.
- ROTORCRAFT** - Collective name for helicopters.
- SHIPPING BLOCKADE** - Sealing off a place to prevent goods or people from entering or leaving.
- SPAN-LOADING** - The ratio of the weight of an airplane to its wingspan loading.
- STRATEGIC** - The gaining of overall or long-term military advantage.
- SUBSONIC** - Flying at a speed less than the speed of sound.
- SUPERSONIC** - Flying at a speed greater than that of the speed of sound.
- SURVEILLANCE** - Close observation.
- SWEPT WING** - The shape of a wing for high subsonic and supersonic speeds.
- TACTICAL USE** - In immediate support of military operations.
- TANDEM ROTOR** - Two large horizontal rotor assemblies mounted one in front of the other.
- TURBOPROP** - A turboprop engine is a turbine engine that drives an aircraft propeller.
- TWIN-BOOM** - The rear airframe consists of two separate fuselages connected by a single horizontal stabilizer.
- UTILITY AIRCRAFT** - A light aircraft usually used for transporting people, freight or other supplies.

Eurofighter Typhoon FGR4



SPEED	1,550 mph (2,495 km/hr)
MACH SPEED	2.02
MAIDEN FLIGHT	1994
NUMBER PRODUCED	570
COST	£125 million
WINGSPAN	36 ft
CREW CAPACITY	2
FLIGHT RANGE	2,355 miles
BEAT THAT STAT RATING	9

Did you know?



The Typhoon can reach speeds of up to twice the speed of sound and can reach 1,100 mph in just over two minutes from take-off. The aircraft's name, Typhoon, was adopted in September 1998. It is in service with several airforces, including the RAF.

F-35B Lightning



SPEED	1,199 mph (1,929 km/hr)
MACH SPEED	1.56
MAIDEN FLIGHT	2006
NUMBER PRODUCED	530
COST	£91 million
WINGSPAN	35 ft
CREW CAPACITY	2
FLIGHT RANGE	1,700 miles
BEAT THAT STAT RATING	7

Did you know?



The F-35B Lightning has more than 40,000 pounds of thrust that can propel it to speeds of about Mach 1.6 (1,200 mph). It is a single-seat, single-engine, all-weather aircraft. This aircraft is expected to operate until 2070.

English Electric Lightning



SPEED	1,128 mph (1,815 km/hr)
MACH SPEED	1.47
MAIDEN FLIGHT	1954
NUMBER PRODUCED	337
COST	£199,000
WINGSPAN	35 ft
CREW CAPACITY	1
FLIGHT RANGE	849 miles
BEAT THAT STAT RATING	4

Did you know?



The English Electric Lightning is a British fighter aircraft that served as an interceptor during the 1960s, the 1970s and 1980s. It is a UK designed-and-built fighter capable of Mach 2.

Panavia Tornado F3 I



SPEED

1,674 mph (2,694 km/hr)

MACH SPEED

2.18

MAIDEN FLIGHT

1979

NUMBER PRODUCED

218

COST

£14 million

WINGSPAN

46 ft

CREW CAPACITY

2

FLIGHT RANGE

1,151 miles

BEAT THAT STAT RATING

6

Did you know?

?

The Tornado F3's improvements over the earlier model included engines for high-altitude use, longer afterburner nozzles and automatic wing sweep control which greatly enhanced movement.

Panavia Tornado GR4



SPEED

870 mph (1,400 km/hr)

MACH SPEED

1.13

MAIDEN FLIGHT

1974

NUMBER PRODUCED

992

COST

£14 million

WINGSPAN

47 ft

CREW CAPACITY

2

FLIGHT RANGE

860 miles

BEAT THAT STAT RATING

4

Did you know?



Aeronautical designers made the Panavia Tornado with variable-geometry wing designs for the manoeuvrability and efficient cruise of straight wings with the speed of swept wing designs. It was jointly manufactured by Italy, the United Kingdom, and West Germany.

Boeing E-3D Sentry AEW1



SPEED	530 mph (854 km/hr)
MACH SPEED	0.69
MAIDEN FLIGHT	1976
NUMBER PRODUCED	68
COST	£243 million
WINGSPAN	146 ft
CREW CAPACITY	4
FLIGHT RANGE	4,600 miles
BEAT THAT STAT RATING	7

Did you know?



The Boeing Sentry is an American airborne early warning and control aircraft. It provides all-weather surveillance, command, control, and communications, and is used by several airforces including the Royal Air Force.

Boeing E-7 Wedgetail



SPEED	530 mph (854 km/hr)
MACH SPEED	0.69
MAIDEN FLIGHT	2004
NUMBER PRODUCED	14
COST	£300 million
WINGSPAN	117 ft
CREW CAPACITY	10
FLIGHT RANGE	4,000 miles
BEAT THAT STAT RATING	7

Did you know?



The Boeing E-7 Wedgetail is a twin-engine airborne early warning and control aircraft. It has a fixed, active electronically scanned array radar antenna. It is believed to be named after the wedge-tailed eagle.

Raytheon Sentinel R1



SPEED	667 mph (1,073 km/hr)
MACH SPEED	0.86
MAIDEN FLIGHT	2004
NUMBER PRODUCED	5
COST	£190 million
WINGSPAN	93 ft
CREW CAPACITY	5
FLIGHT RANGE	5,747 miles
BEAT THAT STAT RATING	10

Did you know?



The Raytheon Sentinel is an airborne battlefield and ground surveillance aircraft. The cockpit has a centrally housed, pull-down screen capable of displaying a moving map.

Hawker Beechcraft Shadow R1



SPEED

356 mph (573 km/hr)

MACH SPEED

0.46

MAIDEN FLIGHT

1972

NUMBER PRODUCED

3,781

COST

£6 million

WINGSPAN

57 ft

CREW CAPACITY

2

FLIGHT RANGE

3,185 miles

BEAT THAT STAT RATING

4

Did you know?

?

The Beechcraft Super King Air family is part of a line of twin-turboprop aircraft. It has been in continuous production since 1974, the longest production run of any civilian turboprop aircraft in its class.

General Atomics MQ-9A Reaper



SPEED	300 mph (482 km/hr)
MACH SPEED	0.39
MAIDEN FLIGHT	2001
NUMBER PRODUCED	195
COST	£12 million
WINGSPAN	65 ft
CREW CAPACITY	0 (Unmanned)
FLIGHT RANGE	1,200 miles
BEAT THAT STAT RATING	2

Did you know?



The General Atomics Reaper is an unmanned aerial vehicle which is remotely controlled by RAF personnel based on the ground. It is also known as Predator B. It is often used for surveillance.

Boeing RC-135W Rivet Joint



SPEED	580 mph (933 km/hr)
MACH SPEED	0.75
MAIDEN FLIGHT	1961
NUMBER PRODUCED	32
COST	£246 million
WINGSPAN	130 ft
CREW CAPACITY	3
FLIGHT RANGE	3,450 miles
BEAT THAT STAT RATING	7

Did you know?



The Boeing RC-135 is a family of large reconnaissance aircraft used by the Royal Air Force to provide real-time, on-scene information collection and analysis. Many variants have been modified numerous times, resulting in a large variety of designs and program names.

Boeing Poseidon MRA1



SPEED	564 mph (907 km/hr)
MACH SPEED	0.73
MAIDEN FLIGHT	2009
NUMBER PRODUCED	122
COST	£231 million
WINGSPAN	123 ft
CREW CAPACITY	2
FLIGHT RANGE	1,381 miles
BEAT THAT STAT RATING	4

Did you know?



The Boeing Poseidon was developed for the United States Navy and also operated by the RAF. It is used for anti-submarine and anti-surface operations and for shipping blockade roles.

Nimrod MRA4



SPEED	571 mph (918 km/hr)
MACH SPEED	0.74
MAIDEN FLIGHT	2004
NUMBER PRODUCED	5
COST	£100 million
WINGSPAN	127 ft
CREW CAPACITY	10
FLIGHT RANGE	6,910 miles
BEAT THAT STAT RATING	10

Did you know?



The Nimrod MRA4 was intended to replace the Nimrod MR2 to increase the Nimrod fleet with improvements that included a digital glass cockpit, new detection systems and more efficient jet engines. However due to delays the project was cancelled.

Boeing C-17 Globemaster III



SPEED	670 mph (1,078 km/hr)
MACH SPEED	0.87
MAIDEN FLIGHT	1991
NUMBER PRODUCED	279
COST	£173 million
WINGSPAN	169 ft
CREW CAPACITY	3
FLIGHT RANGE	2,780 miles
BEAT THAT STAT RATING	8

Did you know?



The C-17 Globemaster performs tactical and strategic airlift missions, transporting troops and cargo throughout the world. Additional roles include medical evacuation and airdrop duties.

Airbus A330 MRTT Voyager



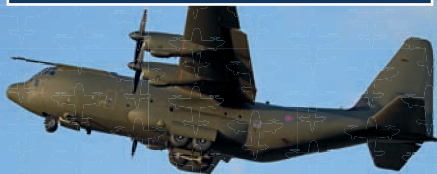
SPEED	547 mph (880 km/hr)
MACH SPEED	0.71
MAIDEN FLIGHT	2007
NUMBER PRODUCED	42
COST	£150 million
WINGSPAN	198 ft
CREW CAPACITY	3
FLIGHT RANGE	1,150 miles
BEAT THAT STAT RATING	3

Did you know?



The Airbus Voyager is an aerial refuelling tanker aircraft. MMRT stands for Multi Role Tanker Transport. It is an air-to-air refuelling and transport aircraft that can refuel other aircraft whilst in flight.

Lockheed Martin C-130J Hercules C4



SPEED

417 mph (671 km/hr)

MACH SPEED

0.54

MAIDEN FLIGHT

1996

NUMBER PRODUCED

400

COST

£111 million

WINGSPAN

132 ft

CREW CAPACITY

3

FLIGHT RANGE

2,100 miles

BEAT THAT STAT RATING

4

Did you know?



The Hercules is the RAF's primary tactical transport aircraft. It has been the backbone of UK operational tactical mobility tasks since it was brought into service in 1999.

Airbus A400M Atlas



SPEED	485 mph (781 km/hr)
MACH SPEED	0.63
MAIDEN FLIGHT	2009
NUMBER PRODUCED	88
COST	£136 million
WINGSPAN	139 ft
CREW CAPACITY	4
FLIGHT RANGE	2,100 miles
BEAT THAT STAT RATING	5

Did you know?



Airbus A400M Atlas is a European four-engine turboprop military transport aircraft. It can perform aerial refuelling and medical evacuation when fitted with appropriate equipment.

BAe 146 CC2 RJ70



SPEED	490 mph (789 km/hr)
MACH SPEED	0.63
MAIDEN FLIGHT	1981
NUMBER PRODUCED	387
COST	£350 million
WINGSPAN	86 ft
CREW CAPACITY	2
FLIGHT RANGE	2,404 miles
BEAT THAT STAT RATING	5

Did you know?



The BAE 146 is primarily tasked in the Command Support Air Transport (CSAT) role. Two 146 variants can be rapidly converted between passenger and cargo configurations. The CC2's primary role is the transport of senior government ministers and Ministry of Defence (MOD) personnel, and senior members of the Royal family.

Avro Vulcan B.2 XL426



SPEED	646 mph (1,039 km/hr)
MACH SPEED	0.84
MAIDEN FLIGHT	1952
NUMBER PRODUCED	136
COST	£750,000
WINGSPAN	99 ft
CREW CAPACITY	5
FLIGHT RANGE	2,607 miles
BEAT THAT STAT RATING	9

Did you know?



The Avro Vulcan XL426 is one of three remaining taxiable Avro Vulcans. It has been owned and maintained by the registered charity the Vulcan Restoration Trust since 1993. It served with the Royal Air Force from 1962 to 1986.

Handley Page Victor



SPEED

627 mph (1,009 km/hr)

MACH SPEED

0.81

MAIDEN FLIGHT

1952

NUMBER PRODUCED

86

COST

£350,000

WINGSPAN

110 ft

CREW CAPACITY

5

FLIGHT RANGE

6,004 miles

BEAT THAT STAT RATING

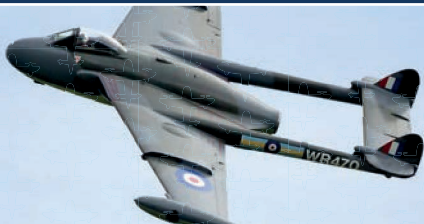
10

Did you know?

?

The Handley Page Victor is a British jet-powered strategic aircraft. It had been developed as part of the United Kingdom's airborne deterrent. A number of Victors were modified for strategic reconnaissance, using a combination of radar, cameras, and other sensors.

De Havilland DH 112 Venom



SPEED	640 mph (1,030 km/hr)
MACH SPEED	0.83
MAIDEN FLIGHT	1949
NUMBER PRODUCED	1,431
COST	£20,100
WINGSPAN	41 ft
CREW CAPACITY	1
FLIGHT RANGE	1,080 miles
BEAT THAT STAT RATING	4

Did you know?



The De Havilland DH 112 Venom is a British post-war single-engined jet aircraft. It has a distinctive twin-boom tail and composite wood/metal structure. Originally developed as a ground-attack fighter, it served as an interceptor as well.

Vickers VC10 Tanker



SPEED	580 mph (933 km/hr)
MACH SPEED	0.75
MAIDEN FLIGHT	1962
NUMBER PRODUCED	54
COST	£2 million
WINGSPAN	146 ft
CREW CAPACITY	4
FLIGHT RANGE	5,850 miles
BEAT THAT STAT RATING	9

Did you know?



The VC10 achieved the fastest crossing of the Atlantic by a subsonic jet airliner of 5 hours and 1 minute, a record that was held for 41 years. The engines were further from the runway surface than an underwing design, an important factor in operations from rough runways.

De Havilland Vampire T.11



SPEED	548 mph (882 km/hr)
MACH SPEED	0.71
MAIDEN FLIGHT	1943
NUMBER PRODUCED	3,268
COST	£29,000
WINGSPAN	38 ft
CREW CAPACITY	1
FLIGHT RANGE	1,220 miles
BEAT THAT STAT RATING	4

Did you know?

? The De Havilland Vampire is a British jet fighter. It was the second jet fighter to be operated by the RAF and the first to be powered by a single jet engine and have groundbreaking innovation of jet propulsion. Despite being originally ordered as an experimental aircraft only, it was decided to mass-produce the aircraft as an interceptor for the Royal Air Force.

SEPECAT Jaguar



SPEED	840 mph (1,350 km/hr)
MACH SPEED	1.09
MAIDEN FLIGHT	1968
NUMBER PRODUCED	543
COST	£6 million
WINGSPAN	28 ft
CREW CAPACITY	2
FLIGHT RANGE	1,182 miles
BEAT THAT STAT RATING	6

Did you know?



Originally designed as a jet trainer, the Jaguar soon changed to include supersonic performance, reconnaissance and tactical roles. It is a single-seat, swept-wing, twin-engine monoplane design, with tall tricycle-type retractable landing gear.

Hawker Siddeley Harrier



SPEED	731 mph (1,176 km/hr)
MACH SPEED	0.95
MAIDEN FLIGHT	1967
NUMBER PRODUCED	278
COST	£3 million
WINGSPAN	25 ft
CREW CAPACITY	1
FLIGHT RANGE	2,130 miles
BEAT THAT STAT RATING	8

Did you know?

?

The Hawker Siddeley Harrier is a British military aircraft. It was the first Harrier Jump Jet series of aircraft, used as the first operational ground attack and reconnaissance aircraft with vertical/short takeoff and landing.

British Aerospace 125



SPEED	370 mph (590 km/hr)
MACH SPEED	0.48
MAIDEN FLIGHT	1962
NUMBER PRODUCED	1,720
COST	£150,000
WINGSPAN	47 ft
CREW CAPACITY	2
FLIGHT RANGE	1,900 miles
BEAT THAT STAT RATING	2

Did you know?



The British Aerospace 125 has a wide variety of customers, ranging from government and military operators, businesses and several airlines. The Royal Air Force had a number of aircraft for multiple roles. The majority of 125's were operated in an airborne training capacity for air force navigators.

Armstrong Whitworth Argosy



SPEED	253 mph (407 km/hr)
MACH SPEED	0.33
MAIDEN FLIGHT	1959
NUMBER PRODUCED	74
COST	£725,000
WINGSPAN	115 ft
CREW CAPACITY	4
FLIGHT RANGE	3,450 miles
BEAT THAT STAT RATING	3

Did you know?



The Armstrong Whitworth Argosy was a British post-war transport/cargo aircraft. It featured an alternative door arrangement, which was largely for paratroop operations. The Argosy was operated by both the Royal Air Force (RAF) and various civil operators across the globe for numerous years.

Gloster Javelin FAW.1



SPEED	710 mph (1,142 km/hr)
MACH SPEED	0.92
MAIDEN FLIGHT	1951
NUMBER PRODUCED	436
COST	£125,000
WINGSPAN	52 ft
CREW CAPACITY	2
FLIGHT RANGE	954 miles
BEAT THAT STAT RATING	4

Did you know?



The Gloster Javelin is a subsonic night and all-weather interceptor aircraft. It is a twin-engine jet monoplane. Its aerodynamic delta wing and tailplane provided excellent manoeuvrability at high speed and excellent control at low landing speeds.

Boeing Chinook HC2 Helicopter



SPEED

183 mph (295 km/hr)

MACH SPEED

0.23

MAIDEN FLIGHT

1980

NUMBER PRODUCED

88

COST

£60 million

WINGSPAN

60 ft

CREW CAPACITY

4

FLIGHT RANGE

400 miles

BEAT THAT STAT RATING

1

Did you know?

?

The Boeing Chinook is a large, tandem rotor helicopter that has seen extensive service. The Chinook is expected to remain in RAF service until the 2040s. They provide routine supply and support missions to the British military.

Westland Puma HC1 Helicopter



SPEED

169 mph (271 km/hr)

MACH SPEED

0.22

MAIDEN FLIGHT

1965

NUMBER PRODUCED

697

COST

£5 million

WINGSPAN

49 ft

CREW CAPACITY

3

FLIGHT RANGE

360 miles

BEAT THAT STAT RATING

1

Did you know?

?

The Puma is a four-bladed, twin-engined medium transport/utility helicopter. It is used for personnel transport and logistic support duties. The descendants of the Puma remain in production in the 21st century.

Bell Griffin HAR.2s Helicopter



SPEED	160 mph (257 km/hr)
MACH SPEED	0.21
MAIDEN FLIGHT	1979
NUMBER PRODUCED	869
COST	£8 million
WINGSPAN	46 ft
CREW CAPACITY	2
FLIGHT RANGE	609 miles
BEAT THAT STAT RATING	1

Did you know?



The Bell Griffin is a multi-role utility helicopter used in a wide variety of roles including search and rescue missions, force protection and providing military aid to civilian authorities. It also has underslung Bambi Buckets for fire fighting. It can carry eight fully-equipped troops.

AgustaWestland AW101 Merlin Helicopter



SPEED

192 mph (308 km/hr)

MACH SPEED

0.25

MAIDEN FLIGHT

1987

NUMBER PRODUCED

180

COST

£22 million

WINGSPAN

61 ft

CREW CAPACITY

4

FLIGHT RANGE

510 miles

BEAT THAT STAT RATING

1

Did you know?

?

The AgustaWestland AW101 is a medium-lift helicopter. Dual flight controls are provided, though it can be flown by a single person. The instruments include six full-colour high-definition screens, an optional mission display and a digital map.

Westland WS-61 Sea King Helicopter



SPEED

129 mph (207 km/hr)

MACH SPEED

0.16

MAIDEN FLIGHT

1969

NUMBER PRODUCED

344

COST

£5 million

WINGSPAN

62 ft

CREW CAPACITY

4

FLIGHT RANGE

764 miles

BEAT THAT STAT RATING

1

Did you know?

?

As well as wartime roles, the Sea King is most well known for search and rescue. The Sea King was also adapted to meet the Royal Navy's requirement for a ship-based airborne early warning platform.

Eurocopter AS350 Squirrel



SPEED	178 mph (286 km/hr)
MACH SPEED	0.23
MAIDEN FLIGHT	1974
NUMBER PRODUCED	3,590
COST	£2 million
WINGSPAN	35 ft
CREW CAPACITY	1
FLIGHT RANGE	411 miles
BEAT THAT STAT RATING	1

Did you know?



The Eurocopter Squirrel is a single-engine light utility helicopter. It is known for its high-altitude performance. Both the main and tail rotors make use of composite material and are designed to minimize corrosion.

Airbus H145 Jupiter (EC145) Helicopter



SPEED	167 mph (268 km/hr)
MACH SPEED	0.21
MAIDEN FLIGHT	1999
NUMBER PRODUCED	1,500
COST	£8 million
WINGSPAN	36 ft
CREW CAPACITY	2
FLIGHT RANGE	420 miles
BEAT THAT STAT RATING	1

Did you know?



The Airbus H145 Jupiter provides advanced rotary wing flying training. The cockpit includes the very latest in avionics. It is a twin-engine aircraft and can carry up to nine passengers along with two crew. It has been used for training, logistics, medical evacuation, reconnaissance, and troop-transport operations.

Airbus H135 Juno (EC135) Helicopter



SPEED	178 mph (286 km/hr)
MACH SPEED	0.23
MAIDEN FLIGHT	1994
NUMBER PRODUCED	1,300
COST	£5 million
WINGSPAN	33 ft
CREW CAPACITY	1
FLIGHT RANGE	395 miles
BEAT THAT STAT RATING	1

Did you know?



The Airbus H135 is a twin-engine civil light utility helicopter. It is capable of flight under instrument flight rules and is outfitted with a digital automatic flight control system. It is mainly used for emergency medical services, law enforcement and military flight training.

English Electric Canberra



SPEED	580 mph (933 km/hr)
MACH SPEED	0.75
MAIDEN FLIGHT	1949
NUMBER PRODUCED	1,352
COST	£73,000
WINGSPAN	64 ft
CREW CAPACITY	3
FLIGHT RANGE	810 miles
BEAT THAT STAT RATING	2

Did you know?



In the 1950s, the Canberra could fly at a higher altitude than any other aircraft in the world. In 1957, a Canberra got a world record for reaching an altitude of 21,430 m. In 1951, another Canberra set another world record when it became the first jet aircraft to make a non-stop transatlantic flight.

Supermarine Spitfire



SPEED	370 mph (595 km/hr)
MACH SPEED	0.48
MAIDEN FLIGHT	1936
NUMBER PRODUCED	20,341
COST	£13,000
WINGSPAN	36 ft
CREW CAPACITY	1
FLIGHT RANGE	248 miles
BEAT THAT STAT RATING	1

Did you know?



The Spitfire was designed as a short-range, high-performance interceptor aircraft. It is a British single-seat fighter aircraft used by the Royal Air Force and other Allied countries before, during, and after World War II. Many variants were built and it was produced in greater numbers than any other British aircraft.

Red Arrows Hawk



SPEED	638 mph (1,026 km/hr)
MACH SPEED	0.83
MAIDEN FLIGHT	1974
NUMBER PRODUCED	1,000
COST	£18 million
WINGSPAN	32 ft
CREW CAPACITY	2
FLIGHT RANGE	1,565 miles
BEAT THAT STAT RATING	5

Did you know?



The Hawk is a British single-engine, jet-powered advanced trainer aircraft. It is used by the RAF's Red Arrows aerobatics display team. The Red Arrows team was formed in late 1964 and continue to perform spectacular feats of flying at many events.

Harrier GR5



SPEED	662 mph (1,065 km/hr)
MACH SPEED	0.86
MAIDEN FLIGHT	1985
NUMBER PRODUCED	143
COST	£13 million
WINGSPAN	30 ft
CREW CAPACITY	1
FLIGHT RANGE	350 miles
BEAT THAT STAT RATING	2

Did you know?



The Harrier GR5 is a vertical/short takeoff and landing aircraft, part of the jump jet family. Modifications included replacing the aluminium fuselage with resin/composite materials to reduce weight and increase range. Its functions are air interdiction, close air support missions and reconnaissance duties.

Avro Lancaster



SPEED

282 mph (454 km/hr)

MACH SPEED

0.36

MAIDEN FLIGHT

1941

NUMBER PRODUCED

7,377

COST

£50,000

WINGSPAN

102 ft

CREW CAPACITY

7

FLIGHT RANGE

2,530 miles

BEAT THAT STAT RATING

2

Did you know?

?

The Lancaster was the main aircraft for the night-time aerial campaigns of World War II. Other roles included long range anti-submarine patrol, air-sea rescue, photo-reconnaissance and aerial mapping. It was also used as a flying tanker for aerial refuelling, a transatlantic passenger aircraft, and even as a postal delivery airliner.

Blackburn Buccaneer



SPEED	670 mph (1,078 km/hr)
MACH SPEED	0.87
MAIDEN FLIGHT	1958
NUMBER PRODUCED	211
COST	£2 million
WINGSPAN	44 ft
CREW CAPACITY	7
FLIGHT RANGE	2,300 miles
BEAT THAT STAT RATING	7

Did you know?



The Blackburn Buccaneer is a British carrier-capable aircraft originally designed in the 1950s for the Royal Navy. It could approach enemy ships at low altitudes below the ship's radar horizon. The RAF adopted the Buccaneer in 1969 with new-builds having RAF-type communications and avionics equipment.

Vickers Valiant



SPEED	567 mph (912 km/hr)
MACH SPEED	0.73
MAIDEN FLIGHT	1951
NUMBER PRODUCED	107
COST	£400,000
WINGSPAN	114 ft
CREW CAPACITY	5
FLIGHT RANGE	4,500 miles
BEAT THAT STAT RATING	8

Did you know?



The Vickers Valiant was developed in the 1950's as a British high-altitude jet and later switched roles to undertake low-level flight. Some were converted to perform support roles such as aerial refuelling tankers and aerial reconnaissance. It was retired in 1965.

The Royal Air Force is the United Kingdom's aerial force. It was formed towards the end of the First World War in 1918.



It became the largest air force in the world at the time! The RAF works with partners around the world to strengthen national and international security and to protect the interests of the UK and its allies. The RAF identify and manage threats before they happen through intelligence, surveillance and reconnaissance.

Beat That Stat!

Beat That Stat! is a card game full of facts and figures. Your aim is to try to win the most cards by having the highest value statistics to beat those of your opponents. If your card wins, you get to take their cards from them. As an extra bonus you get to learn lots of really interesting facts about the aircraft of the RAF, past and present.

Perhaps it will inspire you to find out more. You could visit the RAF museum. Have a look on this site: www.rafmuseum.org.uk.



How to Play

1. Shuffle the pack.
2. Deal out the cards face down to each player.
3. Each player looks at the card at the top of their pack.
4. Player to the dealer's left starts, chooses and reads out one category and its stat from their top card.
5. The other players read out the same stat.
6. The highest number wins all the cards from that round and puts them at the bottom of their pack.
7. If two or more cards have the same value the cards from this round are put in the middle of the table. The winner of the next round also wins the cards in the middle.
8. The winner of each round is the next player to choose a stat from their top card.
9. The player with all the cards at the end of the game wins
10. If you want a quicker game, give it a time limit. The winner is the player with the most cards at the end of the game.



Categories and Ratings (what they mean)

- SPEED KM/HR** - Speed km/hr measures the maximum speed the aircraft can travel in kilometres miles per hour
- SPEED MPH** - Speed mph measures the maximum speed the aircraft can travel in miles per hour
- MACH SPEED** - Mach Speed is the ratio of the speed of an object to the speed of sound. An aircraft moving twice as fast as the speed of sound is said to be traveling at Mach 2
- MAIDEN FLIGHT** - Maiden flight/Year put into service is the term used to describe the aircraft's first flight or the year it was first introduced into the service
- NUMBER PRODUCED** - The number produced is the number given at the time of the information source being published.
- COST** - The cost is the price of a single unit. Due to inflation over many years this price may seem really high for newer aircraft, or really low for older ones. That's inflation! For consistency we have converted all prices to UK Pound sterling currency.
- WINGSPAN** - Wingspan or Rotor Diameter is the maximum extent across the wings of an aircraft measured from tip to tip
- CREW CAPACITY** - This is the typical number of crew that the aircraft can carry
- FLIGHT RANGE** - The Flight Range is the maximum distance an aircraft can fly between take-off and landing, as limited by fuel capacity in powered aircraft.
- BEAT THAT STAT RATING** - The BTS Rating is an overall score for each aircraft, based mainly on Speed and Range with the other categories also taken into account to decide how fantastic we feel each aircraft is. The highest number in each category wins.

How to work out the rankings:

Speed km/hr - Higher number wins

Speed mph - Higher number wins

Mach Speed - Higher number wins

Maiden flight - Later date wins

Number produced - Higher number wins

Cost - Higher number wins

Wingspan - Higher number wins

Crew Capacity - Higher number wins

Flight Range - Higher number wins



Definitions

- AERODYNAMIC** - Having a shape which reduces the drag from air moving past.
- AERONAUTICAL** - The science or practice of building or flying aircraft.
- AFTERBURNER NOZZLES** - A device in the tailpipe of a turbojet engine for injecting fuel into the hot exhaust gases and burning it to provide extra thrust.
- AUTONOMOUS FLIGHT** - Ability of operating without direct human control.
- AVIONICS** - Electronic equipment fitted in an aircraft.
- CONFIGURATION** - Arrangement of parts in a particular form.
- CSAT** - Command Support Air Transport.
- DETERRENT** - A thing that discourages someone from doing something.
- ECM** - Electronic Countermeasure Equipment used to trick an enemy's detection systems.
- FENESTRON TAIL** - A protected tail rotor of a helicopter operating like a ducted fan.
- INNOVATION** - New methods, ideas or product.
- INTELLIGENCE** - The collection of information of military value.
- INTERCEPTOR** - A fast aircraft for stopping or repelling enemy aircraft.
- JET PROPULSION** - Forward movement created by the backward ejection of a high-speed jet of gas or liquid.
- JET-POWERED** - Powered by one or more jet engines.
- LOGISTIC** - The organisation of something complicated such as the distribution of supplies.
- MACH SPEED** - The ratio of the speed of an object to the speed of sound. An aircraft moving twice as fast as the speed of sound = 'Mach 2'.
- MAIDEN FLIGHT** - An aircraft's first flight.
- MANOEUVRABILITY** - Ability to be moved easily while in motion.
- MMRT** - Multi Role Tanker Transport.



Definitions

- MOD** - Ministry of Defence.
- MONOPLANE** - An aircraft with one pair of wings.
- NAVIGATOR** - A person who plans the route of an aircraft.
- PARATROOP** - A group of soldiers trained to jump out of aircraft using a parachute.
- PAYLOAD** - The part of a vehicle's load, such as passengers and cargo, from which income is earned.
- RECONNAISSANCE** - Military observation of a region to locate an enemy or find strategic features.
- RETRACTABLE** - Able to be drawn back in.
- ROTORCRAFT** - Collective name for helicopters.
- SHIPPING BLOCKADE** - Sealing off a place to prevent goods or people from entering or leaving.
- SPAN-LOADING** - The ratio of the weight of an airplane to its wingspan loading.
- STRATEGIC** - The gaining of overall or long-term military advantage.
- SUBSONIC** - Flying at a speed less than the speed of sound.
- SUPERSONIC** - Flying at a speed greater than that of the speed of sound.
- SURVEILLANCE** - Close observation.
- SWEPT WING** - The shape of a wing for high subsonic and supersonic speeds.
- TACTICAL USE** - In immediate support of military operations.
- TANDEM ROTOR** - Two large horizontal rotor assemblies mounted one in front of the other.
- TURBOPROP** - A turboprop engine is a turbine engine that drives an aircraft propeller.
- TWIN-BOOM** - The rear airframe consists of two separate fuselages connected by a single horizontal stabilizer.
- UTILITY AIRCRAFT** - A light aircraft usually used for transporting people, freight or other supplies.

Eurofighter Typhoon FGR4



SPEED

1,550 mph (2,495 km/hr)

MACH SPEED

2.02

MAIDEN FLIGHT

1994

NUMBER PRODUCED

570

COST

£125 million

WINGSPAN

36 ft

CREW CAPACITY

2

FLIGHT RANGE

2,355 miles

BEAT THAT STAT RATING

9

Did you know?

?

The Typhoon can reach speeds of up to twice the speed of sound and can reach 1,100 mph in just over two minutes from take-off. The aircraft's name, Typhoon, was adopted in September 1998. It is in service with several airforces, including the RAF.

F-35B Lightning



SPEED	1,199 mph (1,929 km/hr)
MACH SPEED	1.56
MAIDEN FLIGHT	2006
NUMBER PRODUCED	530
COST	£91 million
WINGSPAN	35 ft
CREW CAPACITY	2
FLIGHT RANGE	1,700 miles
BEAT THAT STAT RATING	7

Did you know?



The F-35B Lightning has more than 40,000 pounds of thrust that can propel it to speeds of about Mach 1.6 (1,200 mph). It is a single-seat, single-engine, all-weather aircraft. This aircraft is expected to operate until 2070.

English Electric Lightning



SPEED	1,128 mph (1,815 km/hr)
MACH SPEED	1.47
MAIDEN FLIGHT	1954
NUMBER PRODUCED	337
COST	£199,000
WINGSPAN	35 ft
CREW CAPACITY	1
FLIGHT RANGE	849 miles
BEAT THAT STAT RATING	4

Did you know?



The English Electric Lightning is a British fighter aircraft that served as an interceptor during the 1960s, the 1970s and 1980s. It is a UK designed-and-built fighter capable of Mach 2.

Panavia Tornado F3 I



SPEED

1,674 mph (2,694 km/hr)

MACH SPEED

2.18

MAIDEN FLIGHT

1979

NUMBER PRODUCED

218

COST

£14 million

WINGSPAN

46 ft

CREW CAPACITY

2

FLIGHT RANGE

1,151 miles

BEAT THAT STAT RATING

6

Did you know?

?

The Tornado F3's improvements over the earlier model included engines for high-altitude use, longer afterburner nozzles and automatic wing sweep control which greatly enhanced movement.

Panavia Tornado GR4



SPEED

870 mph (1,400 km/hr)

MACH SPEED

1.13

MAIDEN FLIGHT

1974

NUMBER PRODUCED

992

COST

£14 million

WINGSPAN

47 ft

CREW CAPACITY

2

FLIGHT RANGE

860 miles

BEAT THAT STAT RATING

4

Did you know?



Aeronautical designers made the Panavia Tornado with variable-geometry wing designs for the manoeuvrability and efficient cruise of straight wings with the speed of swept wing designs. It was jointly manufactured by Italy, the United Kingdom, and West Germany.

Boeing E-3D Sentry AEW1



SPEED	530 mph (854 km/hr)
MACH SPEED	0.69
MAIDEN FLIGHT	1976
NUMBER PRODUCED	68
COST	£243 million
WINGSPAN	146 ft
CREW CAPACITY	4
FLIGHT RANGE	4,600 miles
BEAT THAT STAT RATING	7

Did you know?



The Boeing Sentry is an American airborne early warning and control aircraft. It provides all-weather surveillance, command, control, and communications, and is used by several airforces including the Royal Air Force.

Boeing E-7 Wedgetail



SPEED	530 mph (854 km/hr)
MACH SPEED	0.69
MAIDEN FLIGHT	2004
NUMBER PRODUCED	14
COST	£300 million
WINGSPAN	117 ft
CREW CAPACITY	10
FLIGHT RANGE	4,000 miles
BEAT THAT STAT RATING	7

Did you know?



The Boeing E-7 Wedgetail is a twin-engine airborne early warning and control aircraft. It has a fixed, active electronically scanned array radar antenna. It is believed to be named after the wedge-tailed eagle.

Raytheon Sentinel R1



SPEED	667 mph (1,073 km/hr)
MACH SPEED	0.86
MAIDEN FLIGHT	2004
NUMBER PRODUCED	5
COST	£190 million
WINGSPAN	93 ft
CREW CAPACITY	5
FLIGHT RANGE	5,747 miles
BEAT THAT STAT RATING	10

Did you know?



The Raytheon Sentinel is an airborne battlefield and ground surveillance aircraft. The cockpit has a centrally housed, pull-down screen capable of displaying a moving map.

Hawker Beechcraft Shadow R1



SPEED

356 mph (573 km/hr)

MACH SPEED

0.46

MAIDEN FLIGHT

1972

NUMBER PRODUCED

3,781

COST

£6 million

WINGSPAN

57 ft

CREW CAPACITY

2

FLIGHT RANGE

3,185 miles

BEAT THAT STAT RATING

4

Did you know?

?

The Beechcraft Super King Air family is part of a line of twin-turboprop aircraft. It has been in continuous production since 1974, the longest production run of any civilian turboprop aircraft in its class.

General Atomics MQ-9A Reaper



SPEED	300 mph (482 km/hr)
MACH SPEED	0.39
MAIDEN FLIGHT	2001
NUMBER PRODUCED	195
COST	£12 million
WINGSPAN	65 ft
CREW CAPACITY	0 (Unmanned)
FLIGHT RANGE	1,200 miles
BEAT THAT STAT RATING	2

Did you know?



The General Atomics Reaper is an unmanned aerial vehicle which is remotely controlled by RAF personnel based on the ground. It is also known as Predator B. It is often used for surveillance.

Boeing RC-135W Rivet Joint



SPEED	580 mph (933 km/hr)
MACH SPEED	0.75
MAIDEN FLIGHT	1961
NUMBER PRODUCED	32
COST	£246 million
WINGSPAN	130 ft
CREW CAPACITY	3
FLIGHT RANGE	3,450 miles
BEAT THAT STAT RATING	7

Did you know?



The Boeing RC-135 is a family of large reconnaissance aircraft used by the Royal Air Force to provide real-time, on-scene information collection and analysis. Many variants have been modified numerous times, resulting in a large variety of designs and program names.

Boeing Poseidon MRA1



SPEED	564 mph (907 km/hr)
MACH SPEED	0.73
MAIDEN FLIGHT	2009
NUMBER PRODUCED	122
COST	£231 million
WINGSPAN	123 ft
CREW CAPACITY	2
FLIGHT RANGE	1,381 miles
BEAT THAT STAT RATING	4

Did you know?



The Boeing Poseidon was developed for the United States Navy and also operated by the RAF. It is used for anti-submarine and anti-surface operations and for shipping blockade roles.

Nimrod MRA4



SPEED	571 mph (918 km/hr)
MACH SPEED	0.74
MAIDEN FLIGHT	2004
NUMBER PRODUCED	5
COST	£100 million
WINGSPAN	127 ft
CREW CAPACITY	10
FLIGHT RANGE	6,910 miles
BEAT THAT STAT RATING	10

Did you know?

? The Nimrod MRA4 was intended to replace the Nimrod MR2 to increase the Nimrod fleet with improvements that included a digital glass cockpit, new detection systems and more efficient jet engines. However due to delays the project was cancelled.

Boeing C-17 Globemaster III



SPEED	670 mph (1,078 km/hr)
MACH SPEED	0.87
MAIDEN FLIGHT	1991
NUMBER PRODUCED	279
COST	£173 million
WINGSPAN	169 ft
CREW CAPACITY	3
FLIGHT RANGE	2,780 miles
BEAT THAT STAT RATING	8

Did you know?



The C-17 Globemaster performs tactical and strategic airlift missions, transporting troops and cargo throughout the world. Additional roles include medical evacuation and airdrop duties.

Airbus A330 MRTT Voyager



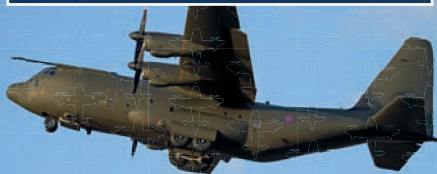
SPEED	547 mph (880 km/hr)
MACH SPEED	0.71
MAIDEN FLIGHT	2007
NUMBER PRODUCED	42
COST	£150 million
WINGSPAN	198 ft
CREW CAPACITY	3
FLIGHT RANGE	1,150 miles
BEAT THAT STAT RATING	3

Did you know?



The Airbus Voyager is an aerial refuelling tanker aircraft. MMRT stands for Multi Role Tanker Transport. It is an air-to-air refuelling and transport aircraft that can refuel other aircraft whilst in flight.

Lockheed Martin C-130J Hercules C4



SPEED

417 mph (671 km/hr)

MACH SPEED

0.54

MAIDEN FLIGHT

1996

NUMBER PRODUCED

400

COST

£111 million

WINGSPAN

132 ft

CREW CAPACITY

3

FLIGHT RANGE

2,100 miles

BEAT THAT STAT RATING

4

Did you know?



The Hercules is the RAF's primary tactical transport aircraft. It has been the backbone of UK operational tactical mobility tasks since it was brought into service in 1999.

Airbus A400M Atlas



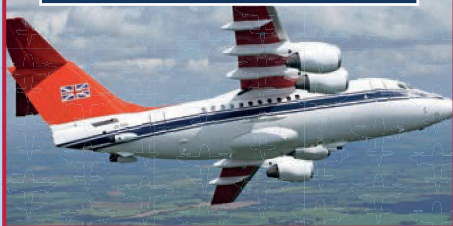
SPEED	485 mph (781 km/hr)
MACH SPEED	0.63
MAIDEN FLIGHT	2009
NUMBER PRODUCED	88
COST	£136 million
WINGSPAN	139 ft
CREW CAPACITY	4
FLIGHT RANGE	2,100 miles
BEAT THAT STAT RATING	5

Did you know?



Airbus A400M Atlas is a European four-engine turboprop military transport aircraft. It can perform aerial refuelling and medical evacuation when fitted with appropriate equipment.

BAe 146 CC2 RJ70



SPEED	490 mph (789 km/hr)
MACH SPEED	0.63
MAIDEN FLIGHT	1981
NUMBER PRODUCED	387
COST	£350 million
WINGSPAN	86 ft
CREW CAPACITY	2
FLIGHT RANGE	2,404 miles
BEAT THAT STAT RATING	5

Did you know?



The BAE 146 is primarily tasked in the Command Support Air Transport (CSAT) role. Two 146 variants can be rapidly converted between passenger and cargo configurations. The CC2's primary role is the transport of senior government ministers and Ministry of Defence (MOD) personnel, and senior members of the Royal family.

Avro Vulcan B.2 XL426



SPEED	646 mph (1,039 km/hr)
MACH SPEED	0.84
MAIDEN FLIGHT	1952
NUMBER PRODUCED	136
COST	£750,000
WINGSPAN	99 ft
CREW CAPACITY	5
FLIGHT RANGE	2,607 miles
BEAT THAT STAT RATING	9

Did you know?



The Avro Vulcan XL426 is one of three remaining taxiable Avro Vulcans. It has been owned and maintained by the registered charity the Vulcan Restoration Trust since 1993. It served with the Royal Air Force from 1962 to 1986.

Handley Page Victor



SPEED

627 mph (1,009 km/hr)

MACH SPEED

0.81

MAIDEN FLIGHT

1952

NUMBER PRODUCED

86

COST

£350,000

WINGSPAN

110 ft

CREW CAPACITY

5

FLIGHT RANGE

6,004 miles

BEAT THAT STAT RATING

10

Did you know?

?

The Handley Page Victor is a British jet-powered strategic aircraft. It had been developed as part of the United Kingdom's airborne deterrent. A number of Victors were modified for strategic reconnaissance, using a combination of radar, cameras, and other sensors.

De Havilland DH 112 Venom



SPEED	640 mph (1,030 km/hr)
MACH SPEED	0.83
MAIDEN FLIGHT	1949
NUMBER PRODUCED	1,431
COST	£20,100
WINGSPAN	41 ft
CREW CAPACITY	1
FLIGHT RANGE	1,080 miles
BEAT THAT STAT RATING	4

Did you know?



The De Havilland DH 112 Venom is a British post-war single-engined jet aircraft. It has a distinctive twin-boom tail and composite wood/metal structure. Originally developed as a ground-attack fighter, it served as an interceptor as well.

Vickers VC10 Tanker



SPEED	580 mph (933 km/hr)
MACH SPEED	0.75
MAIDEN FLIGHT	1962
NUMBER PRODUCED	54
COST	£2 million
WINGSPAN	146 ft
CREW CAPACITY	4
FLIGHT RANGE	5,850 miles
BEAT THAT STAT RATING	9

Did you know?



The VC10 achieved the fastest crossing of the Atlantic by a subsonic jet airliner of 5 hours and 1 minute, a record that was held for 41 years. The engines were further from the runway surface than an underwing design, an important factor in operations from rough runways.

De Havilland Vampire T.11



SPEED	548 mph (882 km/hr)
MACH SPEED	0.71
MAIDEN FLIGHT	1943
NUMBER PRODUCED	3,268
COST	£29,000
WINGSPAN	38 ft
CREW CAPACITY	1
FLIGHT RANGE	1,220 miles
BEAT THAT STAT RATING	4

Did you know?

? The De Havilland Vampire is a British jet fighter. It was the second jet fighter to be operated by the RAF and the first to be powered by a single jet engine and have groundbreaking innovation of jet propulsion. Despite being originally ordered as an experimental aircraft only, it was decided to mass-produce the aircraft as an interceptor for the Royal Air Force.

SEPECAT Jaguar



SPEED	840 mph (1,350 km/hr)
MACH SPEED	1.09
MAIDEN FLIGHT	1968
NUMBER PRODUCED	543
COST	£6 million
WINGSPAN	28 ft
CREW CAPACITY	2
FLIGHT RANGE	1,182 miles
BEAT THAT STAT RATING	6

Did you know?



Originally designed as a jet trainer, the Jaguar soon changed to include supersonic performance, reconnaissance and tactical roles. It is a single-seat, swept-wing, twin-engine monoplane design, with tall tricycle-type retractable landing gear.

Hawker Siddeley Harrier



SPEED	731 mph (1,176 km/hr)
MACH SPEED	0.95
MAIDEN FLIGHT	1967
NUMBER PRODUCED	278
COST	£3 million
WINGSPAN	25 ft
CREW CAPACITY	1
FLIGHT RANGE	2,130 miles
BEAT THAT STAT RATING	8

Did you know?

?

The Hawker Siddeley Harrier is a British military aircraft. It was the first Harrier Jump Jet series of aircraft, used as the first operational ground attack and reconnaissance aircraft with vertical/short takeoff and landing.

British Aerospace 125



SPEED	370 mph (590 km/hr)
MACH SPEED	0.48
MAIDEN FLIGHT	1962
NUMBER PRODUCED	1,720
COST	£150,000
WINGSPAN	47 ft
CREW CAPACITY	2
FLIGHT RANGE	1,900 miles
BEAT THAT STAT RATING	2

Did you know?



The British Aerospace 125 has a wide variety of customers, ranging from government and military operators, businesses and several airlines. The Royal Air Force had a number of aircraft for multiple roles. The majority of 125's were operated in an airborne training capacity for air force navigators.

Armstrong Whitworth Argosy



SPEED	253 mph (407 km/hr)
MACH SPEED	0.33
MAIDEN FLIGHT	1959
NUMBER PRODUCED	74
COST	£725,000
WINGSPAN	115 ft
CREW CAPACITY	4
FLIGHT RANGE	3,450 miles
BEAT THAT STAT RATING	3

Did you know?



The Armstrong Whitworth Argosy was a British post-war transport/cargo aircraft. It featured an alternative door arrangement, which was largely for paratroop operations. The Argosy was operated by both the Royal Air Force (RAF) and various civil operators across the globe for numerous years.

Gloster Javelin FAW.1



SPEED	710 mph (1,142 km/hr)
MACH SPEED	0.92
MAIDEN FLIGHT	1951
NUMBER PRODUCED	436
COST	£125,000
WINGSPAN	52 ft
CREW CAPACITY	2
FLIGHT RANGE	954 miles
BEAT THAT STAT RATING	4

Did you know?



The Gloster Javelin is a subsonic night and all-weather interceptor aircraft. It is a twin-engine jet monoplane. Its aerodynamic delta wing and tailplane provided excellent manoeuvrability at high speed and excellent control at low landing speeds.

Boeing Chinook HC2 Helicopter



SPEED

183 mph (295 km/hr)

MACH SPEED

0.23

MAIDEN FLIGHT

1980

NUMBER PRODUCED

88

COST

£60 million

WINGSPAN

60 ft

CREW CAPACITY

4

FLIGHT RANGE

400 miles

BEAT THAT STAT RATING

1

Did you know?

?

The Boeing Chinook is a large, tandem rotor helicopter that has seen extensive service. The Chinook is expected to remain in RAF service until the 2040s. They provide routine supply and support missions to the British military.

Westland Puma HC1 Helicopter



SPEED

169 mph (271 km/hr)

MACH SPEED

0.22

MAIDEN FLIGHT

1965

NUMBER PRODUCED

697

COST

£5 million

WINGSPAN

49 ft

CREW CAPACITY

3

FLIGHT RANGE

360 miles

BEAT THAT STAT RATING

1

Did you know?

?

The Puma is a four-bladed, twin-engined medium transport/utility helicopter. It is used for personnel transport and logistic support duties. The descendants of the Puma remain in production in the 21st century.

Bell Griffin HAR.2s Helicopter



SPEED	160 mph (257 km/hr)
MACH SPEED	0.21
MAIDEN FLIGHT	1979
NUMBER PRODUCED	869
COST	£8 million
WINGSPAN	46 ft
CREW CAPACITY	2
FLIGHT RANGE	609 miles
BEAT THAT STAT RATING	1

Did you know?



The Bell Griffin is a multi-role utility helicopter used in a wide variety of roles including search and rescue missions, force protection and providing military aid to civilian authorities. It also has underslung Bambi Buckets for fire fighting. It can carry eight fully-equipped troops.

AgustaWestland AW101 Merlin Helicopter



SPEED

192 mph (308 km/hr)

MACH SPEED

0.25

MAIDEN FLIGHT

1987

NUMBER PRODUCED

180

COST

£22 million

WINGSPAN

61 ft

CREW CAPACITY

4

FLIGHT RANGE

510 miles

BEAT THAT STAT RATING

1

Did you know?

?

The AgustaWestland AW101 is a medium-lift helicopter. Dual flight controls are provided, though it can be flown by a single person. The instruments include six full-colour high-definition screens, an optional mission display and a digital map.

Westland WS-61 Sea King Helicopter



SPEED

129 mph (207 km/hr)

MACH SPEED

0.16

MAIDEN FLIGHT

1969

NUMBER PRODUCED

344

COST

£5 million

WINGSPAN

62 ft

CREW CAPACITY

4

FLIGHT RANGE

764 miles

BEAT THAT STAT RATING

1

Did you know?

?

As well as wartime roles, the Sea King is most well known for search and rescue. The Sea King was also adapted to meet the Royal Navy's requirement for a ship-based airborne early warning platform.

Eurocopter AS350 Squirrel



SPEED	178 mph (286 km/hr)
MACH SPEED	0.23
MAIDEN FLIGHT	1974
NUMBER PRODUCED	3,590
COST	£2 million
WINGSPAN	35 ft
CREW CAPACITY	1
FLIGHT RANGE	411 miles
BEAT THAT STAT RATING	1

Did you know?



The Eurocopter Squirrel is a single-engine light utility helicopter. It is known for its high-altitude performance. Both the main and tail rotors make use of composite material and are designed to minimize corrosion.

Airbus H145 Jupiter (EC145) Helicopter



SPEED	167 mph (268 km/hr)
MACH SPEED	0.21
MAIDEN FLIGHT	1999
NUMBER PRODUCED	1,500
COST	£8 million
WINGSPAN	36 ft
CREW CAPACITY	2
FLIGHT RANGE	420 miles
BEAT THAT STAT RATING	1

Did you know?



The Airbus H145 Jupiter provides advanced rotary wing flying training. The cockpit includes the very latest in avionics. It is a twin-engine aircraft and can carry up to nine passengers along with two crew. It has been used for training, logistics, medical evacuation, reconnaissance, and troop-transport operations.

Airbus H135 Juno (EC135) Helicopter



SPEED	178 mph (286 km/hr)
MACH SPEED	0.23
MAIDEN FLIGHT	1994
NUMBER PRODUCED	1,300
COST	£5 million
WINGSPAN	33 ft
CREW CAPACITY	1
FLIGHT RANGE	395 miles
BEAT THAT STAT RATING	1

Did you know?



The Airbus H135 is a twin-engine civil light utility helicopter. It is capable of flight under instrument flight rules and is outfitted with a digital automatic flight control system. It is mainly used for emergency medical services, law enforcement and military flight training.

English Electric Canberra



SPEED

580 mph (933 km/hr)

MACH SPEED

0.75

MAIDEN FLIGHT

1949

NUMBER PRODUCED

1,352

COST

£73,000

WINGSPAN

64 ft

CREW CAPACITY

3

FLIGHT RANGE

810 miles

BEAT THAT STAT RATING

2

Did you know?

?

In the 1950s, the Canberra could fly at a higher altitude than any other aircraft in the world. In 1957, a Canberra got a world record for reaching an altitude of 21,430 m. In 1951, another Canberra set another world record when it became the first jet aircraft to make a non-stop transatlantic flight.

Supermarine Spitfire



SPEED	370 mph (595 km/hr)
MACH SPEED	0.48
MAIDEN FLIGHT	1936
NUMBER PRODUCED	20,341
COST	£13,000
WINGSPAN	36 ft
CREW CAPACITY	1
FLIGHT RANGE	248 miles
BEAT THAT STAT RATING	1

Did you know?



The Spitfire was designed as a short-range, high-performance interceptor aircraft. It is a British single-seat fighter aircraft used by the Royal Air Force and other Allied countries before, during, and after World War II. Many variants were built and it was produced in greater numbers than any other British aircraft.

Red Arrows Hawk



SPEED	638 mph (1,026 km/hr)
MACH SPEED	0.83
MAIDEN FLIGHT	1974
NUMBER PRODUCED	1,000
COST	£18 million
WINGSPAN	32 ft
CREW CAPACITY	2
FLIGHT RANGE	1,565 miles
BEAT THAT STAT RATING	5

Did you know?



The Hawk is a British single-engine, jet-powered advanced trainer aircraft. It is used by the RAF's Red Arrows aerobatics display team. The Red Arrows team was formed in late 1964 and continue to perform spectacular feats of flying at many events.

Harrier GR5



SPEED	662 mph (1,065 km/hr)
MACH SPEED	0.86
MAIDEN FLIGHT	1985
NUMBER PRODUCED	143
COST	£13 million
WINGSPAN	30 ft
CREW CAPACITY	1
FLIGHT RANGE	350 miles
BEAT THAT STAT RATING	2

Did you know?



The Harrier GR5 is a vertical/short takeoff and landing aircraft, part of the jump jet family. Modifications included replacing the aluminium fuselage with resin/composite materials to reduce weight and increase range. Its functions are air interdiction, close air support missions and reconnaissance duties.

Avro Lancaster



SPEED

282 mph (454 km/hr)

MACH SPEED

0.36

MAIDEN FLIGHT

1941

NUMBER PRODUCED

7,377

COST

£50,000

WINGSPAN

102 ft

CREW CAPACITY

7

FLIGHT RANGE

2,530 miles

BEAT THAT STAT RATING

2

Did you know?

?

The Lancaster was the main aircraft for the night-time aerial campaigns of World War II. Other roles included long range anti-submarine patrol, air-sea rescue, photo-reconnaissance and aerial mapping. It was also used as a flying tanker for aerial refuelling, a transatlantic passenger aircraft, and even as a postal delivery airliner.

Blackburn Buccaneer



SPEED	670 mph (1,078 km/hr)
MACH SPEED	0.87
MAIDEN FLIGHT	1958
NUMBER PRODUCED	211
COST	£2 million
WINGSPAN	44 ft
CREW CAPACITY	7
FLIGHT RANGE	2,300 miles
BEAT THAT STAT RATING	7

Did you know?



The Blackburn Buccaneer is a British carrier-capable aircraft originally designed in the 1950s for the Royal Navy. It could approach enemy ships at low altitudes below the ship's radar horizon. The RAF adopted the Buccaneer in 1969 with new-builds having RAF-type communications and avionics equipment.

Vickers Valiant



SPEED	567 mph (912 km/hr)
MACH SPEED	0.73
MAIDEN FLIGHT	1951
NUMBER PRODUCED	107
COST	£400,000
WINGSPAN	114 ft
CREW CAPACITY	5
FLIGHT RANGE	4,500 miles
BEAT THAT STAT RATING	8

Did you know?



The Vickers Valiant was developed in the 1950's as a British high-altitude jet and later switched roles to undertake low-level flight. Some were converted to perform support roles such as aerial refuelling tankers and aerial reconnaissance. It was retired in 1965.

The Royal Air Force is the United Kingdom's aerial force. It was formed towards the end of the First World War in 1918.



It became the largest air force in the world at the time! The RAF works with partners around the world to strengthen national and international security and to protect the interests of the UK and its allies. The RAF identify and manage threats before they happen through intelligence, surveillance and reconnaissance.

Beat That Stat!

Beat That Stat! is a card game full of facts and figures. Your aim is to try to win the most cards by having the highest value statistics to beat those of your opponents. If your card wins, you get to take their cards from them. As an extra bonus you get to learn lots of really interesting facts about the aircraft of the RAF, past and present.

Perhaps it will inspire you to find out more. You could visit the RAF museum. Have a look on this site: www.rafmuseum.org.uk.



How to Play

1. Shuffle the pack.
2. Deal out the cards face down to each player.
3. Each player looks at the card at the top of their pack.
4. Player to the dealer's left starts, chooses and reads out one category and its stat from their top card.
5. The other players read out the same stat.
6. The highest number wins all the cards from that round and puts them at the bottom of their pack.
7. If two or more cards have the same value the cards from this round are put in the middle of the table. The winner of the next round also wins the cards in the middle.
8. The winner of each round is the next player to choose a stat from their top card.
9. The player with all the cards at the end of the game wins
10. If you want a quicker game, give it a time limit. The winner is the player with the most cards at the end of the game.



Categories and Ratings (what they mean)

- SPEED KM/HR** - Speed km/hr measures the maximum speed the aircraft can travel in kilometres miles per hour
- SPEED MPH** - Speed mph measures the maximum speed the aircraft can travel in miles per hour
- MACH SPEED** - Mach Speed is the ratio of the speed of an object to the speed of sound. An aircraft moving twice as fast as the speed of sound is said to be traveling at Mach 2
- MAIDEN FLIGHT** - Maiden flight/Year put into service is the term used to describe the aircraft's first flight or the year it was first introduced into the service
- NUMBER PRODUCED** - The number produced is the number given at the time of the information source being published.
- COST** - The cost is the price of a single unit. Due to inflation over many years this price may seem really high for newer aircraft, or really low for older ones. That's inflation! For consistency we have converted all prices to UK Pound sterling currency.
- WINGSPAN** - Wingspan or Rotor Diameter is the maximum extent across the wings of an aircraft measured from tip to tip
- CREW CAPACITY** - This is the typical number of crew that the aircraft can carry
- FLIGHT RANGE** - The Flight Range is the maximum distance an aircraft can fly between take-off and landing, as limited by fuel capacity in powered aircraft.
- BEAT THAT STAT RATING** - The BTS Rating is an overall score for each aircraft, based mainly on Speed and Range with the other categories also taken into account to decide how fantastic we feel each aircraft is. The highest number in each category wins.

How to work out the rankings:

Speed km/hr - Higher number wins

Speed mph - Higher number wins

Mach Speed - Higher number wins

Maiden flight - Later date wins

Number produced - Higher number wins

Cost - Higher number wins

Wingspan - Higher number wins

Crew Capacity - Higher number wins

Flight Range - Higher number wins



Definitions

- AERODYNAMIC** - Having a shape which reduces the drag from air moving past.
- AERONAUTICAL** - The science or practice of building or flying aircraft.
- AFTERBURNER NOZZLES** - A device in the tailpipe of a turbojet engine for injecting fuel into the hot exhaust gases and burning it to provide extra thrust.
- AUTONOMOUS FLIGHT** - Ability of operating without direct human control.
- AVIONICS** - Electronic equipment fitted in an aircraft.
- CONFIGURATION** - Arrangement of parts in a particular form.
- CSAT** - Command Support Air Transport.
- DETERRENT** - A thing that discourages someone from doing something.
- ECM** - Electronic Countermeasure Equipment used to trick an enemy's detection systems.
- FENESTRON TAIL** - A protected tail rotor of a helicopter operating like a ducted fan.
- INNOVATION** - New methods, ideas or product.
- INTELLIGENCE** - The collection of information of military value.
- INTERCEPTOR** - A fast aircraft for stopping or repelling enemy aircraft.
- JET PROPULSION** - Forward movement created by the backward ejection of a high-speed jet of gas or liquid.
- JET-POWERED** - Powered by one or more jet engines.
- LOGISTIC** - The organisation of something complicated such as the distribution of supplies.
- MACH SPEED** - The ratio of the speed of an object to the speed of sound. An aircraft moving twice as fast as the speed of sound = 'Mach 2'.
- MAIDEN FLIGHT** - An aircraft's first flight.
- MANOEUVRABILITY** - Ability to be moved easily while in motion.
- MMRT** - Multi Role Tanker Transport.



Definitions

- MOD** - Ministry of Defence.
- MONOPLANE** - An aircraft with one pair of wings.
- NAVIGATOR** - A person who plans the route of an aircraft.
- PARATROOP** - A group of soldiers trained to jump out of aircraft using a parachute.
- PAYLOAD** - The part of a vehicle's load, such as passengers and cargo, from which income is earned.
- RECONNAISSANCE** - Military observation of a region to locate an enemy or find strategic features.
- RETRACTABLE** - Able to be drawn back in.
- ROTORCRAFT** - Collective name for helicopters.
- SHIPPING BLOCKADE** - Sealing off a place to prevent goods or people from entering or leaving.
- SPAN-LOADING** - The ratio of the weight of an airplane to its wingspan loading.
- STRATEGIC** - The gaining of overall or long-term military advantage.
- SUBSONIC** - Flying at a speed less than the speed of sound.
- SUPERSONIC** - Flying at a speed greater than that of the speed of sound.
- SURVEILLANCE** - Close observation.
- SWEPT WING** - The shape of a wing for high subsonic and supersonic speeds.
- TACTICAL USE** - In immediate support of military operations.
- TANDEM ROTOR** - Two large horizontal rotor assemblies mounted one in front of the other.
- TURBOPROP** - A turboprop engine is a turbine engine that drives an aircraft propeller.
- TWIN-BOOM** - The rear airframe consists of two separate fuselages connected by a single horizontal stabilizer.
- UTILITY AIRCRAFT** - A light aircraft usually used for transporting people, freight or other supplies.

Eurofighter Typhoon FGR4



SPEED	1,550 mph (2,495 km/hr)
MACH SPEED	2.02
MAIDEN FLIGHT	1994
NUMBER PRODUCED	570
COST	£125 million
WINGSPAN	36 ft
CREW CAPACITY	2
FLIGHT RANGE	2,355 miles
BEAT THAT STAT RATING	9

Did you know?



The Typhoon can reach speeds of up to twice the speed of sound and can reach 1,100 mph in just over two minutes from take-off. The aircraft's name, Typhoon, was adopted in September 1998. It is in service with several airforces, including the RAF.

F-35B Lightning



SPEED	1,199 mph (1,929 km/hr)
MACH SPEED	1.56
MAIDEN FLIGHT	2006
NUMBER PRODUCED	530
COST	£91 million
WINGSPAN	35 ft
CREW CAPACITY	2
FLIGHT RANGE	1,700 miles
BEAT THAT STAT RATING	7

Did you know?



The F-35B Lightning has more than 40,000 pounds of thrust that can propel it to speeds of about Mach 1.6 (1,200 mph). It is a single-seat, single-engine, all-weather aircraft. This aircraft is expected to operate until 2070.

English Electric Lightning



SPEED	1,128 mph (1,815 km/hr)
MACH SPEED	1.47
MAIDEN FLIGHT	1954
NUMBER PRODUCED	337
COST	£199,000
WINGSPAN	35 ft
CREW CAPACITY	1
FLIGHT RANGE	849 miles
BEAT THAT STAT RATING	4

Did you know?



The English Electric Lightning is a British fighter aircraft that served as an interceptor during the 1960s, the 1970s and 1980s. It is a UK designed-and-built fighter capable of Mach 2.

Panavia Tornado F3 I



SPEED	1,674 mph (2,694 km/hr)
MACH SPEED	2.18
MAIDEN FLIGHT	1979
NUMBER PRODUCED	218
COST	£14 million
WINGSPAN	46 ft
CREW CAPACITY	2
FLIGHT RANGE	1,151 miles
BEAT THAT STAT RATING	6

Did you know?



The Tornado F3's improvements over the earlier model included engines for high-altitude use, longer afterburner nozzles and automatic wing sweep control which greatly enhanced movement.

Panavia Tornado GR4



SPEED

870 mph (1,400 km/hr)

MACH SPEED

1.13

MAIDEN FLIGHT

1974

NUMBER PRODUCED

992

COST

£14 million

WINGSPAN

47 ft

CREW CAPACITY

2

FLIGHT RANGE

860 miles

BEAT THAT STAT RATING

4

Did you know?



Aeronautical designers made the Panavia Tornado with variable-geometry wing designs for the manoeuvrability and efficient cruise of straight wings with the speed of swept wing designs. It was jointly manufactured by Italy, the United Kingdom, and West Germany.

Boeing E-3D Sentry AEW1



SPEED	530 mph (854 km/hr)
MACH SPEED	0.69
MAIDEN FLIGHT	1976
NUMBER PRODUCED	68
COST	£243 million
WINGSPAN	146 ft
CREW CAPACITY	4
FLIGHT RANGE	4,600 miles
BEAT THAT STAT RATING	7

Did you know?



The Boeing Sentry is an American airborne early warning and control aircraft. It provides all-weather surveillance, command, control, and communications, and is used by several airforces including the Royal Air Force.

Boeing E-7 Wedgetail



SPEED	530 mph (854 km/hr)
MACH SPEED	0.69
MAIDEN FLIGHT	2004
NUMBER PRODUCED	14
COST	£300 million
WINGSPAN	117 ft
CREW CAPACITY	10
FLIGHT RANGE	4,000 miles
BEAT THAT STAT RATING	7

Did you know?



The Boeing E-7 Wedgetail is a twin-engine airborne early warning and control aircraft. It has a fixed, active electronically scanned array radar antenna. It is believed to be named after the wedge-tailed eagle.

Raytheon Sentinel R1



SPEED	667 mph (1,073 km/hr)
MACH SPEED	0.86
MAIDEN FLIGHT	2004
NUMBER PRODUCED	5
COST	£190 million
WINGSPAN	93 ft
CREW CAPACITY	5
FLIGHT RANGE	5,747 miles
BEAT THAT STAT RATING	10

Did you know?



The Raytheon Sentinel is an airborne battlefield and ground surveillance aircraft. The cockpit has a centrally housed, pull-down screen capable of displaying a moving map.

Hawker Beechcraft Shadow R1



SPEED

356 mph (573 km/hr)

MACH SPEED

0.46

MAIDEN FLIGHT

1972

NUMBER PRODUCED

3,781

COST

£6 million

WINGSPAN

57 ft

CREW CAPACITY

2

FLIGHT RANGE

3,185 miles

BEAT THAT STAT RATING

4

Did you know?

?

The Beechcraft Super King Air family is part of a line of twin-turboprop aircraft. It has been in continuous production since 1974, the longest production run of any civilian turboprop aircraft in its class.

General Atomics MQ-9A Reaper



SPEED	300 mph (482 km/hr)
MACH SPEED	0.39
MAIDEN FLIGHT	2001
NUMBER PRODUCED	195
COST	£12 million
WINGSPAN	65 ft
CREW CAPACITY	0 (Unmanned)
FLIGHT RANGE	1,200 miles
BEAT THAT STAT RATING	2

Did you know?



The General Atomics Reaper is an unmanned aerial vehicle which is remotely controlled by RAF personnel based on the ground. It is also known as Predator B. It is often used for surveillance.

Boeing RC-135W Rivet Joint



SPEED	580 mph (933 km/hr)
MACH SPEED	0.75
MAIDEN FLIGHT	1961
NUMBER PRODUCED	32
COST	£246 million
WINGSPAN	130 ft
CREW CAPACITY	3
FLIGHT RANGE	3,450 miles
BEAT THAT STAT RATING	7

Did you know?



The Boeing RC-135 is a family of large reconnaissance aircraft used by the Royal Air Force to provide real-time, on-scene information collection and analysis. Many variants have been modified numerous times, resulting in a large variety of designs and program names.

Boeing Poseidon MRA1



SPEED	564 mph (907 km/hr)
MACH SPEED	0.73
MAIDEN FLIGHT	2009
NUMBER PRODUCED	122
COST	£231 million
WINGSPAN	123 ft
CREW CAPACITY	2
FLIGHT RANGE	1,381 miles
BEAT THAT STAT RATING	4

Did you know?



The Boeing Poseidon was developed for the United States Navy and also operated by the RAF. It is used for anti-submarine and anti-surface operations and for shipping blockade roles.

Nimrod MRA4



SPEED	571 mph (918 km/hr)
MACH SPEED	0.74
MAIDEN FLIGHT	2004
NUMBER PRODUCED	5
COST	£100 million
WINGSPAN	127 ft
CREW CAPACITY	10
FLIGHT RANGE	6,910 miles
BEAT THAT STAT RATING	10

Did you know?



The Nimrod MRA4 was intended to replace the Nimrod MR2 to increase the Nimrod fleet with improvements that included a digital glass cockpit, new detection systems and more efficient jet engines. However due to delays the project was cancelled.

Boeing C-17 Globemaster III



SPEED	670 mph (1,078 km/hr)
MACH SPEED	0.87
MAIDEN FLIGHT	1991
NUMBER PRODUCED	279
COST	£173 million
WINGSPAN	169 ft
CREW CAPACITY	3
FLIGHT RANGE	2,780 miles
BEAT THAT STAT RATING	8

Did you know?



The C-17 Globemaster performs tactical and strategic airlift missions, transporting troops and cargo throughout the world. Additional roles include medical evacuation and airdrop duties.

Airbus A330 MRTT Voyager



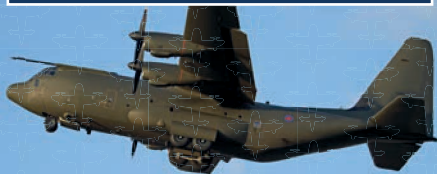
SPEED	547 mph (880 km/hr)
MACH SPEED	0.71
MAIDEN FLIGHT	2007
NUMBER PRODUCED	42
COST	£150 million
WINGSPAN	198 ft
CREW CAPACITY	3
FLIGHT RANGE	1,150 miles
BEAT THAT STAT RATING	3

Did you know?



The Airbus Voyager is an aerial refuelling tanker aircraft. MMRT stands for Multi Role Tanker Transport. It is an air-to-air refuelling and transport aircraft that can refuel other aircraft whilst in flight.

Lockheed Martin C-130J Hercules C4



SPEED

417 mph (671 km/hr)

MACH SPEED

0.54

MAIDEN FLIGHT

1996

NUMBER PRODUCED

400

COST

£111 million

WINGSPAN

132 ft

CREW CAPACITY

3

FLIGHT RANGE

2,100 miles

BEAT THAT STAT RATING

4

Did you know?



The Hercules is the RAF's primary tactical transport aircraft. It has been the backbone of UK operational tactical mobility tasks since it was brought into service in 1999.

Airbus A400M Atlas



SPEED	485 mph (781 km/hr)
MACH SPEED	0.63
MAIDEN FLIGHT	2009
NUMBER PRODUCED	88
COST	£136 million
WINGSPAN	139 ft
CREW CAPACITY	4
FLIGHT RANGE	2,100 miles
BEAT THAT STAT RATING	5

Did you know?



Airbus A400M Atlas is a European four-engine turboprop military transport aircraft. It can perform aerial refuelling and medical evacuation when fitted with appropriate equipment.

BAe 146 CC2 RJ70



SPEED	490 mph (789 km/hr)
MACH SPEED	0.63
MAIDEN FLIGHT	1981
NUMBER PRODUCED	387
COST	£350 million
WINGSPAN	86 ft
CREW CAPACITY	2
FLIGHT RANGE	2,404 miles
BEAT THAT STAT RATING	5

Did you know?



The BAE 146 is primarily tasked in the Command Support Air Transport (CSAT) role. Two 146 variants can be rapidly converted between passenger and cargo configurations. The CC2's primary role is the transport of senior government ministers and Ministry of Defence (MOD) personnel, and senior members of the Royal family.

Avro Vulcan B.2 XL426



SPEED	646 mph (1,039 km/hr)
MACH SPEED	0.84
MAIDEN FLIGHT	1952
NUMBER PRODUCED	136
COST	£750,000
WINGSPAN	99 ft
CREW CAPACITY	5
FLIGHT RANGE	2,607 miles
BEAT THAT STAT RATING	9

Did you know?



The Avro Vulcan XL426 is one of three remaining taxiable Avro Vulcans. It has been owned and maintained by the registered charity the Vulcan Restoration Trust since 1993. It served with the Royal Air Force from 1962 to 1986.

Handley Page Victor



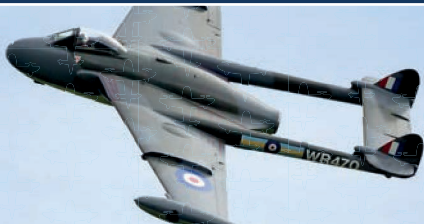
SPEED	627 mph (1,009 km/hr)
MACH SPEED	0.81
MAIDEN FLIGHT	1952
NUMBER PRODUCED	86
COST	£350,000
WINGSPAN	110 ft
CREW CAPACITY	5
FLIGHT RANGE	6,004 miles
BEAT THAT STAT RATING	10

Did you know?

?

The Handley Page Victor is a British jet-powered strategic aircraft. It had been developed as part of the United Kingdom's airborne deterrent. A number of Victors were modified for strategic reconnaissance, using a combination of radar, cameras, and other sensors.

De Havilland DH 112 Venom



SPEED	640 mph (1,030 km/hr)
MACH SPEED	0.83
MAIDEN FLIGHT	1949
NUMBER PRODUCED	1,431
COST	£20,100
WINGSPAN	41 ft
CREW CAPACITY	1
FLIGHT RANGE	1,080 miles
BEAT THAT STAT RATING	4

Did you know?



The De Havilland DH 112 Venom is a British post-war single-engined jet aircraft. It has a distinctive twin-boom tail and composite wood/metal structure. Originally developed as a ground-attack fighter, it served as an interceptor as well.

Vickers VC10 Tanker



SPEED	580 mph (933 km/hr)
MACH SPEED	0.75
MAIDEN FLIGHT	1962
NUMBER PRODUCED	54
COST	£2 million
WINGSPAN	146 ft
CREW CAPACITY	4
FLIGHT RANGE	5,850 miles
BEAT THAT STAT RATING	9

Did you know?



The VC10 achieved the fastest crossing of the Atlantic by a subsonic jet airliner of 5 hours and 1 minute, a record that was held for 41 years. The engines were further from the runway surface than an underwing design, an important factor in operations from rough runways.

De Havilland Vampire T.11



SPEED	548 mph (882 km/hr)
MACH SPEED	0.71
MAIDEN FLIGHT	1943
NUMBER PRODUCED	3,268
COST	£29,000
WINGSPAN	38 ft
CREW CAPACITY	1
FLIGHT RANGE	1,220 miles
BEAT THAT STAT RATING	4

Did you know?

? The De Havilland Vampire is a British jet fighter. It was the second jet fighter to be operated by the RAF and the first to be powered by a single jet engine and have groundbreaking innovation of jet propulsion. Despite being originally ordered as an experimental aircraft only, it was decided to mass-produce the aircraft as an interceptor for the Royal Air Force.

SEPECAT Jaguar



SPEED	840 mph (1,350 km/hr)
MACH SPEED	1.09
MAIDEN FLIGHT	1968
NUMBER PRODUCED	543
COST	£6 million
WINGSPAN	28 ft
CREW CAPACITY	2
FLIGHT RANGE	1,182 miles
BEAT THAT STAT RATING	6

Did you know?



Originally designed as a jet trainer, the Jaguar soon changed to include supersonic performance, reconnaissance and tactical roles. It is a single-seat, swept-wing, twin-engine monoplane design, with tall tricycle-type retractable landing gear.

Hawker Siddeley Harrier



SPEED	731 mph (1,176 km/hr)
MACH SPEED	0.95
MAIDEN FLIGHT	1967
NUMBER PRODUCED	278
COST	£3 million
WINGSPAN	25 ft
CREW CAPACITY	1
FLIGHT RANGE	2,130 miles
BEAT THAT STAT RATING	8

Did you know?

?

The Hawker Siddeley Harrier is a British military aircraft. It was the first Harrier Jump Jet series of aircraft, used as the first operational ground attack and reconnaissance aircraft with vertical/short takeoff and landing.

British Aerospace 125

**SPEED****370 mph (590 km/hr)****MACH SPEED****0.48****MAIDEN FLIGHT****1962****NUMBER PRODUCED****1,720****COST****£150,000****WINGSPAN****47 ft****CREW CAPACITY****2****FLIGHT RANGE****1,900 miles****BEAT THAT STAT RATING****2**

Did you know?



The British Aerospace 125 has a wide variety of customers, ranging from government and military operators, businesses and several airlines. The Royal Air Force had a number of aircraft for multiple roles. The majority of 125's were operated in an airborne training capacity for air force navigators.

Armstrong Whitworth Argosy



SPEED	253 mph (407 km/hr)
MACH SPEED	0.33
MAIDEN FLIGHT	1959
NUMBER PRODUCED	74
COST	£725,000
WINGSPAN	115 ft
CREW CAPACITY	4
FLIGHT RANGE	3,450 miles
BEAT THAT STAT RATING	3

Did you know?



The Armstrong Whitworth Argosy was a British post-war transport/cargo aircraft. It featured an alternative door arrangement, which was largely for paratroop operations. The Argosy was operated by both the Royal Air Force (RAF) and various civil operators across the globe for numerous years.

Gloster Javelin FAW.1



SPEED	710 mph (1,142 km/hr)
MACH SPEED	0.92
MAIDEN FLIGHT	1951
NUMBER PRODUCED	436
COST	£125,000
WINGSPAN	52 ft
CREW CAPACITY	2
FLIGHT RANGE	954 miles
BEAT THAT STAT RATING	4

Did you know?



The Gloster Javelin is a subsonic night and all-weather interceptor aircraft. It is a twin-engine jet monoplane. Its aerodynamic delta wing and tailplane provided excellent manoeuvrability at high speed and excellent control at low landing speeds.

Boeing Chinook HC2 Helicopter



SPEED

183 mph (295 km/hr)

MACH SPEED

0.23

MAIDEN FLIGHT

1980

NUMBER PRODUCED

88

COST

£60 million

WINGSPAN

60 ft

CREW CAPACITY

4

FLIGHT RANGE

400 miles

BEAT THAT STAT RATING

1

Did you know?

?

The Boeing Chinook is a large, tandem rotor helicopter that has seen extensive service. The Chinook is expected to remain in RAF service until the 2040s. They provide routine supply and support missions to the British military.

Westland Puma HC1 Helicopter



SPEED

169 mph (271 km/hr)

MACH SPEED

0.22

MAIDEN FLIGHT

1965

NUMBER PRODUCED

697

COST

£5 million

WINGSPAN

49 ft

CREW CAPACITY

3

FLIGHT RANGE

360 miles

BEAT THAT STAT RATING

1

Did you know?

?

The Puma is a four-bladed, twin-engined medium transport/utility helicopter. It is used for personnel transport and logistic support duties. The descendants of the Puma remain in production in the 21st century.

Bell Griffin HAR.2s Helicopter



SPEED	160 mph (257 km/hr)
MACH SPEED	0.21
MAIDEN FLIGHT	1979
NUMBER PRODUCED	869
COST	£8 million
WINGSPAN	46 ft
CREW CAPACITY	2
FLIGHT RANGE	609 miles
BEAT THAT STAT RATING	1

Did you know?



The Bell Griffon is a multi-role utility helicopter used in a wide variety of roles including search and rescue missions, force protection and providing military aid to civilian authorities. It also has underslung Bambi Buckets for fire fighting. It can carry eight fully-equipped troops.

AgustaWestland AW101 Merlin Helicopter



SPEED

192 mph (308 km/hr)

MACH SPEED

0.25

MAIDEN FLIGHT

1987

NUMBER PRODUCED

180

COST

£22 million

WINGSPAN

61 ft

CREW CAPACITY

4

FLIGHT RANGE

510 miles

BEAT THAT STAT RATING

1

Did you know?

?

The AgustaWestland AW101 is a medium-lift helicopter. Dual flight controls are provided, though it can be flown by a single person. The instruments include six full-colour high-definition screens, an optional mission display and a digital map.

Westland WS-61 Sea King Helicopter



SPEED

129 mph (207 km/hr)

MACH SPEED

0.16

MAIDEN FLIGHT

1969

NUMBER PRODUCED

344

COST

£5 million

WINGSPAN

62 ft

CREW CAPACITY

4

FLIGHT RANGE

764 miles

BEAT THAT STAT RATING

1

Did you know?

?

As well as wartime roles, the Sea King is most well known for search and rescue. The Sea King was also adapted to meet the Royal Navy's requirement for a ship-based airborne early warning platform.

Eurocopter AS350 Squirrel



SPEED	178 mph (286 km/hr)
MACH SPEED	0.23
MAIDEN FLIGHT	1974
NUMBER PRODUCED	3,590
COST	£2 million
WINGSPAN	35 ft
CREW CAPACITY	1
FLIGHT RANGE	411 miles
BEAT THAT STAT RATING	1

Did you know?



The Eurocopter Squirrel is a single-engine light utility helicopter. It is known for its high-altitude performance. Both the main and tail rotors make use of composite material and are designed to minimize corrosion.

Airbus H145 Jupiter (EC145) Helicopter



SPEED	167 mph (268 km/hr)
MACH SPEED	0.21
MAIDEN FLIGHT	1999
NUMBER PRODUCED	1,500
COST	£8 million
WINGSPAN	36 ft
CREW CAPACITY	2
FLIGHT RANGE	420 miles
BEAT THAT STAT RATING	1

Did you know?



The Airbus H145 Jupiter provides advanced rotary wing flying training. The cockpit includes the very latest in avionics. It is a twin-engine aircraft and can carry up to nine passengers along with two crew. It has been used for training, logistics, medical evacuation, reconnaissance, and troop-transport operations.

Airbus H135 Juno (EC135) Helicopter



SPEED	178 mph (286 km/hr)
MACH SPEED	0.23
MAIDEN FLIGHT	1994
NUMBER PRODUCED	1,300
COST	£5 million
WINGSPAN	33 ft
CREW CAPACITY	1
FLIGHT RANGE	395 miles
BEAT THAT STAT RATING	1

Did you know?



The Airbus H135 is a twin-engine civil light utility helicopter. It is capable of flight under instrument flight rules and is outfitted with a digital automatic flight control system. It is mainly used for emergency medical services, law enforcement and military flight training.

English Electric Canberra



SPEED	580 mph (933 km/hr)
MACH SPEED	0.75
MAIDEN FLIGHT	1949
NUMBER PRODUCED	1,352
COST	£73,000
WINGSPAN	64 ft
CREW CAPACITY	3
FLIGHT RANGE	810 miles
BEAT THAT STAT RATING	2

Did you know?



In the 1950s, the Canberra could fly at a higher altitude than any other aircraft in the world. In 1957, a Canberra got a world record for reaching an altitude of 21,430 m. In 1951, another Canberra set another world record when it became the first jet aircraft to make a non-stop transatlantic flight.

Supermarine Spitfire



SPEED	370 mph (595 km/hr)
MACH SPEED	0.48
MAIDEN FLIGHT	1936
NUMBER PRODUCED	20,341
COST	£13,000
WINGSPAN	36 ft
CREW CAPACITY	1
FLIGHT RANGE	248 miles
BEAT THAT STAT RATING	1

Did you know?



The Spitfire was designed as a short-range, high-performance interceptor aircraft. It is a British single-seat fighter aircraft used by the Royal Air Force and other Allied countries before, during, and after World War II. Many variants were built and it was produced in greater numbers than any other British aircraft.

Red Arrows Hawk



SPEED	638 mph (1,026 km/hr)
MACH SPEED	0.83
MAIDEN FLIGHT	1974
NUMBER PRODUCED	1,000
COST	£18 million
WINGSPAN	32 ft
CREW CAPACITY	2
FLIGHT RANGE	1,565 miles
BEAT THAT STAT RATING	5

Did you know?



The Hawk is a British single-engine, jet-powered advanced trainer aircraft. It is used by the RAF's Red Arrows aerobatics display team. The Red Arrows team was formed in late 1964 and continue to perform spectacular feats of flying at many events.

Harrier GR5



SPEED	662 mph (1,065 km/hr)
MACH SPEED	0.86
MAIDEN FLIGHT	1985
NUMBER PRODUCED	143
COST	£13 million
WINGSPAN	30 ft
CREW CAPACITY	1
FLIGHT RANGE	350 miles
BEAT THAT STAT RATING	2

Did you know?



The Harrier GR5 is a vertical/short takeoff and landing aircraft, part of the jump jet family. Modifications included replacing the aluminium fuselage with resin/composite materials to reduce weight and increase range. Its functions are air interdiction, close air support missions and reconnaissance duties.

Avro Lancaster



SPEED

282 mph (454 km/hr)

MACH SPEED

0.36

MAIDEN FLIGHT

1941

NUMBER PRODUCED

7,377

COST

£50,000

WINGSPAN

102 ft

CREW CAPACITY

7

FLIGHT RANGE

2,530 miles

BEAT THAT STAT RATING

2

Did you know?



The Lancaster was the main aircraft for the night-time aerial campaigns of World War II. Other roles included long range anti-submarine patrol, air-sea rescue, photo-reconnaissance and aerial mapping. It was also used as a flying tanker for aerial refuelling, a transatlantic passenger aircraft, and even as a postal delivery airliner.

Blackburn Buccaneer



SPEED	670 mph (1,078 km/hr)
MACH SPEED	0.87
MAIDEN FLIGHT	1958
NUMBER PRODUCED	211
COST	£2 million
WINGSPAN	44 ft
CREW CAPACITY	7
FLIGHT RANGE	2,300 miles
BEAT THAT STAT RATING	7

Did you know?



The Blackburn Buccaneer is a British carrier-capable aircraft originally designed in the 1950s for the Royal Navy. It could approach enemy ships at low altitudes below the ship's radar horizon. The RAF adopted the Buccaneer in 1969 with new-builds having RAF-type communications and avionics equipment.

Vickers Valiant



SPEED

567 mph (912 km/hr)

MACH SPEED

0.73

MAIDEN FLIGHT

1951

NUMBER PRODUCED

107

COST

£400,000

WINGSPAN

114 ft

CREW CAPACITY

5

FLIGHT RANGE

4,500 miles

BEAT THAT STAT RATING

8

Did you know?



The Vickers Valiant was developed in the 1950's as a British high-altitude jet and later switched roles to undertake low-level flight. Some were converted to perform support roles such as aerial refuelling tankers and aerial reconnaissance. It was retired in 1965.